

EXHIBITIONS EXPLORATION 14 *Exploration 14* 24th June 2014 - 13th July 2014

OPENING DRINKS - THURSDAY 26TH JUNE - 5.30-7.30PM

FLG presents our very popular annual showcase of emerging and unsigned artists. Exploration was created to provide a platform for emerging artists to successfully showcase their art within a commercial gallery context. A broad selection of exceptional unsigned artists experimenting with a variety of media are presented.

Baluk Arts



Baluk Arts is fast becoming known for innovative contemporary urban Indigenous work. Over twenty-five Aboriginal artists from south east Melbourne have created Ganggan-Baluk (Many Feathers) ceramic installation to strengthen culture, community and connection to country.

The collaborative installation was a way to strengthen the Baluk Arts collective and ensure cultural revival, knowledge and to share an understanding of Aboriginal culture and creation.

Each feather represents the uniqueness of each individual as all artists have different Aboriginal backgrounds from all over Australia but have come to the Mornington Peninsula, Frankston and south east Melbourne through historical events, policy or forced removal and stolen generation. *The artists would like the feathers to be sold individually so that their Victorian Indigenous culture is scattered back throughout the community, and by sharing their culture it grows and strengthens.*

Many of the feathers have traditional linear designs typical of Victorian Indigenous patterns representing topographic features, dreaming pathways, spiritual energies in the landscape and known boundaries between tribes. These designs are used on weapons, boomerangs, shields and possum skin cloaks.

Where ever feathers lie within nature, they tell the story of what has been before. Each feather helps to remember and celebrate culture and creation and acceptance for what is here and now.

In Indigenous history, the feather is known as both



Exploration 14
Annika Romeyn 'Luminous Earth' 2013
watercolour on stretched paper
150cm x 100cm



Exploration 14
Annika Romeyn 'Luminous Earth 2' 2013
watercolour on stretched paper
150cm x 100cm

delicate and strong and signifies the beginning of a new life. Many of the feathers created by Baluk Arts were inspired by local birds of the area such as rainbow lorikeets, rosellas, cockatoos and others such as emu, waterbirds as well as the creator spirit Bunjil the Eagle, and ancestral moiety Waa the Crow. [View profile](#)

James Blackwell



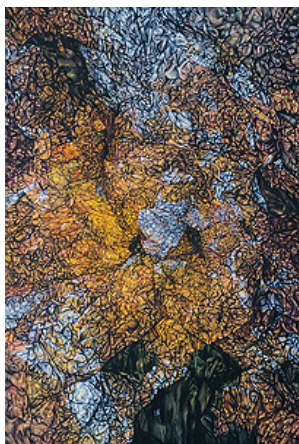
'The onslaught, pace and ubiquity of change in modern life has said to have altered the way our brains are being wired. Our ability and need to adapt to this continuous flux leaves us reaching out for something concrete, something familiar, something certain.' Blackwell's art practice is an attempt to reestablish a connection with nature and offer pause and reflection in an intimate space as an antidote to the barrage of stimulation which has taken host in our new world. His anchor is the landscape in which he inhabits - the Blue Mountains of NSW. Here, the seasons are distinct, reliable and inevitable. This landscape adapts to the backdrop of seasons and offers inspiration in it's repetition and symmetry. This is a value embodied in the artwork that he creates. [View CV](#)

Sheridan Brown



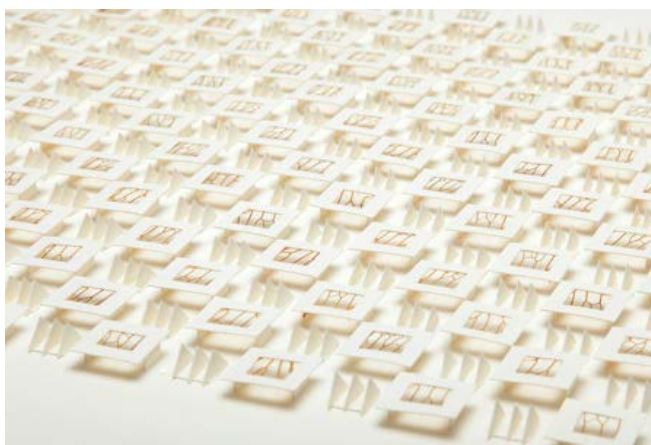
Brown's recent paintings display her continuing fascination with the landscapes ever changing conditions. The importance of capturing the atmosphere, light and shadows, portray for her an image of isolation and silence that can become fearsome yet seductive. While representing a familiar and tangible subject, Brown's painting is more about the need to create a mystery or the unknown of the landscape, rather than reality. Her painting is purely a sensory exploration of the memory of the occasion; shadows and the darkness can create a drama and an interest which is all for aesthetics, but also is a way for her to represent an isolation and silence of a relationship with the land. Local urban parklands are often her muse. By creating a composition constructed from her mind, depicting an emotional and intimate memory of the place and the occasion, Brown attempts to lure the viewer into the seductive picture plane, yet displays a claustrophobic space; one that cannot be infiltrated. The landscape is also a response to and features a political environmental undercurrent, grappling with present day concerns such as climate change. [View CV](#)

Aimee Fitzgerald



Exploration 14

Annika Romeyn 'Luminous Earth (Intersection)' 2014
watercolour on stretched paper
150cm x 100cm



Exploration 14

James Blackwell. '120 Decibels.' 2014
paper and cicada wings
61cm x 60cm framed



Exploration 14

James Blackwell. 'Pod Cluster 0514.' 2014
mixed natural materials and paper
15cm x 8cm x 8cm each approx.



Aimee Fitzgerald's work explores the way we experience photography, from both sides of the camera and on the gallery floor. Her series *Failures* spans the entire length of her photographic career and is composed of the works which did not become works. All self-portraits, ranging from blank-faced lighting tests to moments of complete defeat captured on camera, they expressing a vulnerability that would, ordinarily, never make it into a final piece. They document that moment before becoming, confessing to the limits of equipment and stamina, of the artist's ability to perform. [View CV](#)

Yoshe Gillespie



Yoshe Gillespie works in the process-based discipline of printmaking, with a background in cameraless photography or 'darkroom printmaking'. A reoccurring theme in her work is the use of chance-based processes to create non-figurative compositions that explore the translation of intention within an artwork. She is currently focussed on using lithographic print editions to create unique installation formations. In this work she explores primary mark making, limited to the simple form of a line. Her work conveys a sense of endless variation and emphasises the effect of perspective on perception. Her installation pieces extend the lithographic medium to create two-dimensional structures that comment on the relationship between the copy and the original. [View CV](#)

Sophie Hann



These paintings are a meditation on nature and our relationship to the natural world. The fragmented background suggests shifting viewpoints and questions the reliability of our vision and



Exploration 14

Yoshe Gillespie. 'Irreflection.' 2014

lithograph on Magnani paper, dry mounted on mount board
309cm x 145cm x 68cm



Exploration 14

Laura Skerlj 'Collapsible Valley (Crystal Lake)' oil and acrylic on canvas

183cm x 334cm diptych



Exploration 14

Laura Skerlj 'Collapsible Valley (Forest Box)' oil and acrylic on canvas

183cm x 334cm diptych

our ability to see clearly.

Our vision and understanding of the natural world can be broken, detached, fragmented: nature seen through a car window, a TV, a camera lens. Moreover, our landscape is in flux though urban expansion, industrial development and climate change. It is my hope that our abiding appreciation for the beauty of nature will compel us to rise to the challenge of protecting the environment. [View CV](#)

Claire Primrose



This body of work was inspired and loosely informed by a recent visit to an Artist's Retreat at Coles Bay, Tasmania, which was led by great Australian artist Elisabeth Cummings. During the retreat, Claire spent much time sketching and painting in response to the pristine environment, to ensure that the imagery remained at the forefront of her mind. Once she arrived back in to her studio, she used this material to further experiment, using a variety of different media which she strived to push to the material's limits. Firstly the paint is applied and allowed to partially dry before rinsing most of it off. This leaves behind remnants of vague shapes and textures. Spray paint is then applied with stencil cut outs and may be scrubbed away or even hosed off the surface. These processes are repeated over and over until the desired result is achieved.

Claire is interested in the surprise element, or the "happy accident" that can only be found with bold experimentation and calculated risk. The work is a culmination of many different images, spaces and experiences. Each work is created from memory and much trial and error. [View CV](#)

Michael Prior

Michael G.F. Prior employs strategies of fabrication, organisation and mechanisation to explore musical frameworks with everyday objects.

Influenced by utilitarian approaches to art, music and design, he creates sculptural worlds that focus on the inherent properties of materials: flexibility, resonance, reflectivity; the way things move, hide, reveal, drape, or are subject to gravity. His works invite the viewer into a hypnotic, subtly articulated atmosphere with its own logic.

Michael has exhibited installation works at PICA (2009), MONA FOMA (2010, 2013) and the National Taiwan Museum of Fine Arts (2007-8). Since 2001 he has performed in Helsinki, London, Edinburgh, Berlin, New York, San Francisco and locally for sound programs such as Liquid Architecture and the Now Now. He will exhibit his latest work Elastic Organum at the Heide Museum of Modern Art from June to October 2014. [View CV](#)

Annika Romeyn



Exploration 14

Sheridan Brown. 'Jawbone Reserve Wetlands.' 2014

oil on linen

81cm x 101cm



Exploration 14

Sheridan Brown. 'Waterways Reflection.' 2014

oil on linen

81cm x 101cm



Exploration 14

Sheridan Brown. 'Wetland Grasses.' 2014

oil on linen

81cm x 101cm





Striving to connect the realms of micro and macro, representation and abstraction, Annika's recent artworks are inspired by rock formations and geomorphology as markers of elemental power and dynamism.

Beyond describing the rock-face and its multiplicity of form, Annika hopes to create experiential artworks coloured by my memory and feelings of wilderness areas actively explored by foot, raft or kayak. Working across the mediums of drawing, painting and printmaking she is particularly interested in manipulating the luminosity of watercolor to bring the canyon wall to life as a site of intersection between the intimate and the infinite, the immediate and the ancient. Annika has just been selected as a finalist in the 2014 International Print Exhibit organised by the National Taiwan Museum of Fine Arts. [View CV](#)

Laura Skerlj



Laura Skerlj is a Melbourne based artist and writer. Her art practice concerns painting and assemblage, with a conceptual interest in notions of 'wilderness' and the mythologised natural world.

In 2013 she completed a Master of Fine Arts degree at the Victorian College of the Arts (Melbourne) where she was a recipient of the Australian Postgraduate Award, and has exhibited nationally in artist, government and commercially run spaces.

Parallel to her practice, Laura writes extensively for, and about, contemporary artists and art practices. This has included interviews, biographies and numerous catalogue essays. [View CV](#)

JOIN OUR MAILING LIST

Exploration 14

Aimee Fitzgerald. 'Failure 1.' 2014

archival inkjet print

58cm x 39cm 6 of 6 editions remaining, framed

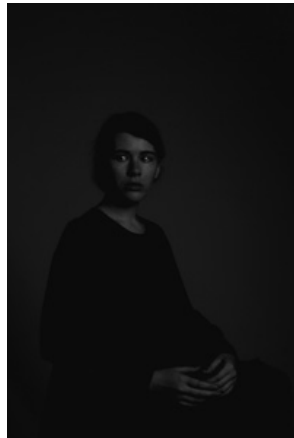


Exploration 14

Aimee Fitzgerald. 'Failure 2.' 2014

archival inkjet print

51cm x 47cm 6 of 6 editions remaining, framed



Exploration 14

Aimee Fitzgerald. 'Failure 4.' 2014

archival inkjet print

59cm x 39cm 6 of 6 editions remaining, framed



Exploration 14

Aimee Fitzgerald. 'Failure 3.' 2014

archival inkjet print

48cm x 48cm 6 of 6 editions remaining, framed



Exploration 14
Aimee Fitzgerald. 'Failure 5.' 2014
 archival inkjet print
 47cm x 71cm 6 of 6 editions remaining, framed



Exploration 14
Aimee Fitzgerald. 'Failure 6.' 2014
 archival inkjet print
 71cm x 47cm 6 of 6 editions remaining, framed



Exploration 14
Baluk Arts 'Ganggan-Baluk (Many Feathers)' 2014
 ceramic
 cm x cm variable sizes, prices range from \$30 - \$120 per piece



Exploration 14
 Claire Primrose. 'Big Impressions.' 2014
 mixed media on gesso board
 31cm x 60cm 51 x 80cm framed



Exploration 14
 Claire Primrose. 'How It Went.' 2014
 mixed media on gesso board
 48cm x 80cm 71 x 100cm framed



Exploration 14
 Claire Primrose. 'Imprinting.' 2014
 mixed media on gesso board
 40cm x 60cm 60 x 80cm framed



Exploration 14

Claire Primrose. 'Trying To Remember.' 2014

mixed media on gesso board

48cm x 80cm 54 x 86cm framed



Exploration 14

Michael Prior 'Dub Stijl' 2014

Floor installation- wood, steel, glass, cardboard, motors, lights, data projector

170cm x 110cm x 80cm photo credit: George Husband



Exploration 14

Sophie Hann 'Agave & Egg Chair' 2014

oil on board

40cm x 60cm



Exploration 14

Sophie Hann 'Man & Horse' 2014

oil on board, framed

40cm x 60cm



Exploration 14
Sophie Hann 'Red Poker & Teal Chair' 2014
oil on board, framed
42cm x 61cm



Exploration 14
Sophie Hann 'Agave & Red Door' 2014
oil on board, framed
46cm x 50cm