

NAOMI WHITE, KEN SMITH, WILLIAM BREEN AND PETER JAMES SMITH

COASTAL

8 - 26 October 2013

NAOMI WHITE

Naomi White has been exhibiting since 2002 and has held numerous solo exhibitions around Australia. In 2012, she was highly Commended for the Calleen Art Award, also winning the People's Choice Award. She has been a finalist in the Tattersall's Art Prize, the Wynne Prize and the Paddington Art Prize. 'I love working with light and the way it changes a vista throughout the day. The different shadows and patterns it makes and the way it can completely change colours from one moment to another depending on the time of day or even the season you see it in.'



Naomi White
Little Island 2013
oil on canvas
78 x 240cm



Artwork in situ on 3.7m wall

PETER JAMES SMITH

Until his retirement to fulltime painting at the end of 2010, Peter James Smith was Professor of Mathematics and Art and Head of the School of Creative Media at RMIT University. He was awarded a residency at Scott Base, Antarctica, in January 2010 as an Antarctic New Zealand Artist Fellow. His paintings are held in many public, private and corporate collections in New Zealand, Australia and internationally, including The University of Melbourne, RMIT University, La Trobe University, The Ian Potter Museum of Art, Gippsland Regional Gallery, Victoria, and the BHP Billiton Collection.



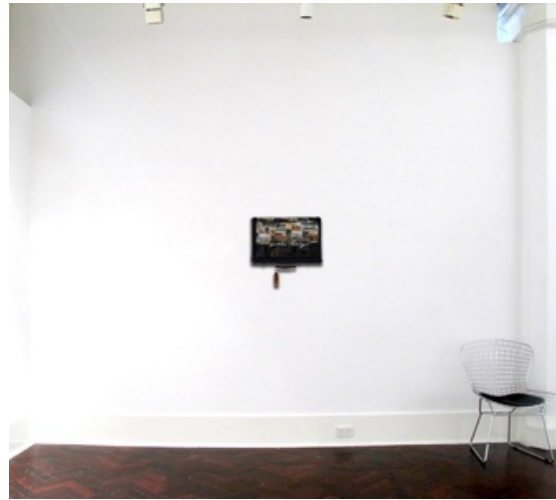
Peter James Smith
Five Bells 2013
61 x 122cm
oil on linen



Artwork in situ on 3.7m wall



Peter James Smith
Apollo Bay 2013
oil, enamel and postcards on found suitcase-
50 x 54 x 7cm



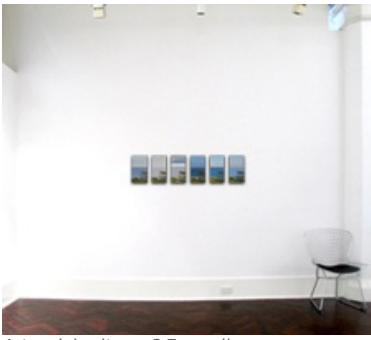
Artwork in situ on 3.7m wall

KEN SMITH

Ken Smith is currently Lecturer in Drawing at MADA, Monash University's Faculty of Art Design and Architecture. He has recently been shortlisted for the Eutick Memorial Still Life Award and in 2012 was awarded the **2012 Rick Amor Drawing Prize** for his work *In The Light Of History I*. Ken has also been a finalist in the Heysen Prize, and a multiple finalist in both the Jacaranda Acquisitive Art Award and the Tattersall's Club Art Prize. His work is also represented in the collections of Artbank, Leeuwin Estate, Michell Endowment, Arbitration Commission and many other corporate and private collections.



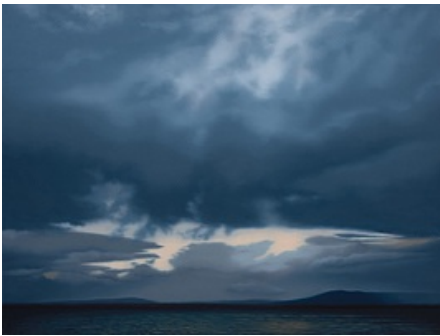
Ken Smith
4 mornings, 2 afternoons 2013
oil on panel
6 panels all together, total size is 30 x 142 cm



Artwork in situ on 3.7m wall

WILLIAM BREEN

Flinders Lane Gallery first exhibited William Breen's paintings in 2000. He was invited to participate in the Tattersalls Art Prize in 2011 & 2013 and shortlisted for the John Leslie Art Prize, and has been a finalist in the Geelong Art Prize and the Fleurieu Peninsula Biennale Art Prize. His paintings are in collections including the Gippsland Art Gallery, RACV Collection, Artbank, Bendigo Art Gallery, the Macquarie Group, National Australia Bank, Loyola College, La Trobe University, and Whitehorse City Council. William Breen was also recently profiled in Australian Art Review.



William Breen
Tideways Dusk 1 2013
oil on linen
76 x 102cm



William Breen
Tideways Dusk 2 2013
oil on linen
76 x 102cm



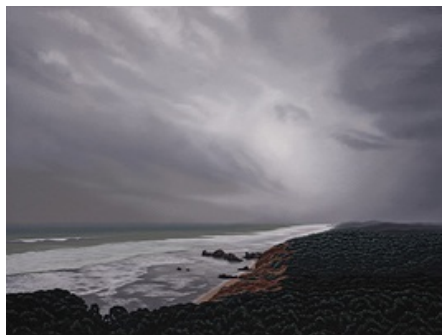
William Breen
Tideways Dusk 3 2013
oil on linen
76 x 102cm



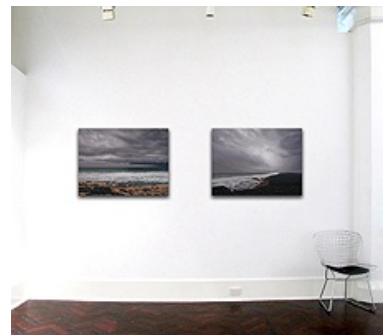
Artworks in situ on 3.7m wall



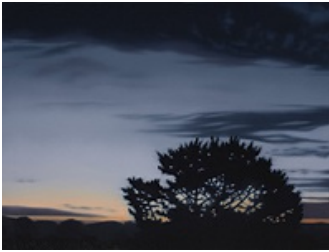
William Breen
Sphinx Rock Track 2013
oil on linen
76 x 102cm



William Breen
The Back Beach 2013
oil on linen
76 x 102cm



Artworks in situ on 3.7m wall



William Breen
Coastal Avenue 2013
oil on linen
38 x 51cm



Artwork in situ on 3.7m wall