

EXPLORATION 12

29 May - 16 June 2012

Now in its twelfth year, Exploration was created to provide a platform for emerging and unsigned artists to showcase their art within a commercial gallery context. Over the years this annual exhibition has launched the careers of many artists. This year's line up comprises recent graduates and independent artists from around the country, and covers disciplines across sculpture, jewellery, painting, photography and installation.

This year's exhibiting artists are:

Dan Bowran : Emily Valentine Bullock : Zoe Croggon : Michelle Day : Rebecca Hastings : Ben Howe : Peter Jordan : Chia-Liang (Lisa) Kao : Josh Robbins : Kat Shapiro Wood : Lawrence Wong

This year also continues the \$5,000 Pleysier Perkins Acquisitive Art Prize. This year's prize was judged by FLG Director Claire Harris, arts writer, editor and curator Owen Craven, curator, writer and art historian Simon Gregg, and Ramon Pleysier and Simon Perkins.

We are delighted to announce Rebecca Hastings as the winner of this year's prize for her work *Rabbit Boy* (pictured below), and would like to thank Pleysier Perkins Architects for their generous support.

DAN BOWRAN

Operating where materialistic integrity is tested - over-working, re-firing, re-shaping and prolonging each step of the process, Dan Bowran aims to test the materials and processes used in kiln-formed glass.



Dan Bowran
I might tell you tonight (upright)
steel & glass
H25 x W12 x D13cm



Dan Bowran
Do you remember the first time (in between)
steel & glass
H25 x W10 x D9cm



Dan Bowran
For the price of a cup of tea (square flow)
steel & glass
H19 x W9 x D11cm



Dan Bowran
Rock Bottom Riser
rock & glass
H18 x W27 x D35cm



Dan Bowran
Love on the rocks with no ice
Rock & Glass
H36 x W19 x D29cm



Dan Bowran
Rockers to swallow
Rock & Glass
H26 x W22 x D27cm



Dan Bowran
The Right Honourable Super Hans
Ceramic & glass
H 20 x W23 x D23cm



Dan Bowran
I don't mind if you forget me
Ceramic & Glass
H16 x W21 x D22cm



Dan Bowran
Buy nothing day (dripper)
glass wash block
H26 x W17 x D17cm



Dan Bowran
Fine for now (dividing)
glass wash block
H14 x W18 x D13cm



Dan Bowran
Lay it down (leaning)
glass wash block
H17 x W19 x D10cm



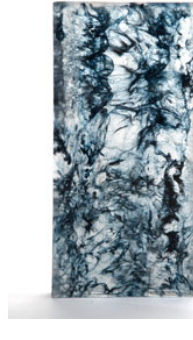
Dan Bowran
It's not fair (double vision)
glass wash panel
H32 x W17 x D4



Dan Bowran
*It's tricky
(DNA)*
glass wash block & steel
H34 x W26 x D12cm



Dan Bowran
*It takes Muscle
(Top Load)*
glass wash block & steel
H20 x W23 x D23cm



Dan Bowran
*It's a dirty world
(wave wash)*
glass wash panel
H32 x W17 x D4



Installation image

MICHELLE DAY

Sculptor and installation artist Michelle Day works with fabric, silicone, steel, glass and light. Focusing on perceptions of growth and the body, her work explores the physical and mental aspects surrounding 'the organic'.



Michelle Day
*The Breaths that Blow
Roundabouts*, 2012
Silicone, thread, organza fabric,
oil paint, metal, found objects,
perspex, wood, electrical
elements and low wattage
fluorescent globes
Approx 100 x 44 x 25cm
Photographer of artworks: Paul Hay



Michelle Day
Floating to Flit-Flotsam 2011
Silicone, organza fabric, oil paint,
jewellery wire, metal, found objects,
perspex, wood, electrical elements
and low wattage fluorescent globes.
Approx. 100 x 50 x 25cm



Michelle Day
Methods of Inflation, 2012
Silicone, organza fabric, oil
paint, jewellery wire, tea
strainers, perspex, wood,
electrical elements and low
wattage fluorescent globes.
Approx. 100 x 44 x 25 cm



Michelle Day - an example of
lightbox that all three artworks are
presented in.



Installation image



Installation image

ZOE CROGGAN

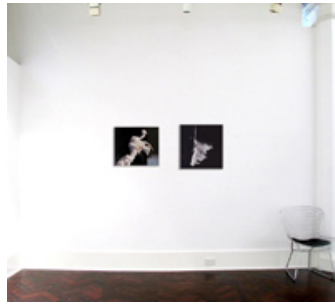
Zoe's work explores texture, light, and form through visual comparison, juxtaposition and connection. Raising the possibility of movement within static images, she is interested in the context and transformation of images.



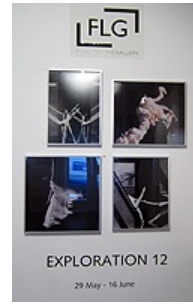
Zoe Croggon
Challenger 2012
photocollage
49 x 56cm
edition of 3



Zoe Croggon
Fonteyn 2012
photocollage
55 x 56cm
edition of 3



Artworks (framed) shown
in situ on 3.7m wall



Installation image



Zoe Croggon
Untitled 2012
photocollage
56 x 44cm
edition of 3



Zoe Croggon
Beyond Habitat 2012
photocollage
56 x 40cm
edition of 3



Artworks (framed) shown in situ
on 3.7m wall

LISA (CHIA-LIANG) KAO

Referencing her own childhood memories, Lisa Kao combines a playful sense of humour and a love of making. Her interest in scale and materials creates jewellery that guides viewers into a miniature dream world.



Chia-Liang (Lisa) Kao
Bear Hunt 2011 (brooch)
mixed materials
10 x 4.5 x 20 cm



Chia-Liang (Lisa) Kao
Lake house (ring) 2011
mixed materials
11.7 x 11.7 x 6.5 cm



Chia-Liang (Lisa) Kao
Pool (ring) 2011
mixed materials
9.8 x 9.8 x 6.5 cm



Chia-Liang (Lisa) Kao
Car crash (brooch) 2011
mixed materials
7.5 x 3 x 3.2 cm



Installation image



Installation image

REBECCA HASTINGS

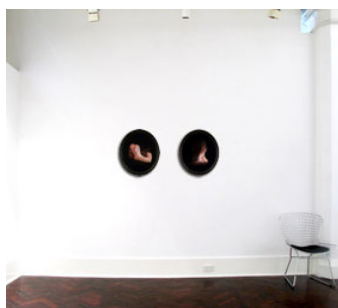
Transgressing the traditional image of mother and child, Rebecca Hastings charts the complexities and contradictions of motherhood, where emotions see-saw between ambivalence, affection and aggression



Rebecca Hastings
Tethered I 2011
oil on board
58 x 52cm (framed)



Rebecca Hastings
Tethered II 2011
oil on board
58 x 52cm (framed)



Artworks in situ on 3.7m wall



Rebecca Hastings
Bird Boy
oil on board
40 x 40cm (framed)



Rebecca Hastings
Wolf Boy
oil on board
40 x 40cm (framed)



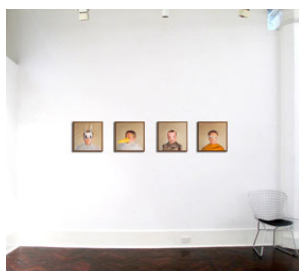
Installation image



Rebecca Hastings
Rabbit Boy
oil on board
40 x 40cm (framed)



Rebecca Hastings
Deer Boy
oil on board
40 x 40cm (framed)



Artworks in situ on 3.7m wall

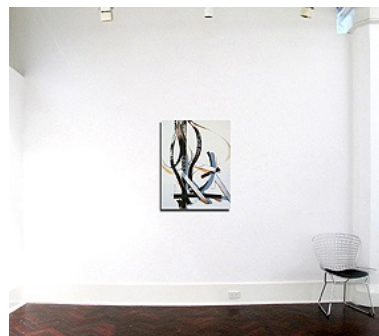
Photographer of artworks: James Field

BEN HOWE

Ben's hyper realist painting circles issues of representation, time, structure and consciousness. Often initially producing his subjects in sculptural form before he paints them, the finished pieces possess a severe beauty.



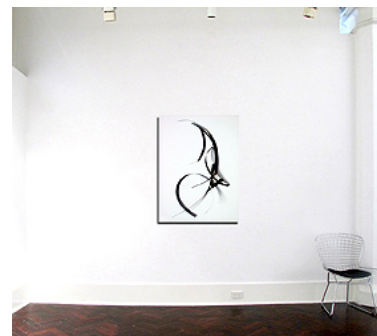
Ben Howe
Strip Segments 2
oil on canvas
100 x 75



in situ on 3.7m wall



Ben Howe
Strip Segments
oil on Canvas
120 x 91cm



in situ on 3.7m wall



Ben Howe
Tumult
acrylic on canvas
119 x 155cm



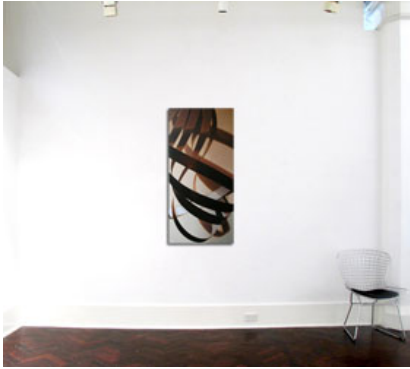
in situ on 3.7m wall



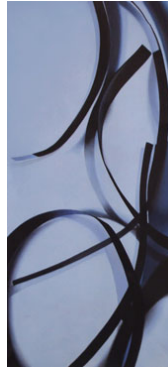
Installation image



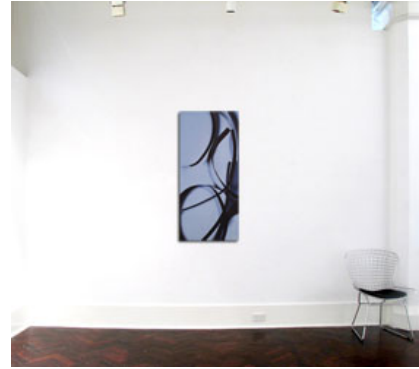
Ben Howe
Arcs 2
oil on canvas
138 x 66cm



in situ on 3.7m wall



Ben Howe
Baby Blue
oil on canvas
130 x 66cm



in situ on 3.7m wall

KAT SHAPIRO WOOD

This work investigates what it is to know and endure fragility. It touches on the profound nature of vulnerability, on the struggle to maintain a grip on the light, to speak to the shadows, to feel deep sorrow. And yet, with the recognition and assimilation of our human vulnerabilities, of imperfection and of the fragility of life, the potential for authentic beauty, courage and joy arises.



Kat Shapiro Wood
Mantle I: The Letting Go
Encaustic and inlaid pigment
on board
93 x 93cm



Mantle 1,
corner detail of work



Kat Shapiro Wood
Mantle II: Gripping the Light
Encaustic and inlaid pigment
on board
93 x 93cm



Installation image



Kat Shapiro Wood
Share the Quiet
Tin, encaustic, pigment, paper
14.5 x 21 x 1.5cm



Kat Shapiro Wood
Steady the Light
Tin, encaustic, pigment, paper
11 x 15 x 1.5cm



Kat Shapiro Wood
The Persistence of Gravity
Bones, encaustic inlay,
glass Petri dish
Petri diameter 15.5cm



Kat Shapiro Wood
Chance by Chance
Bones, encaustic inlay,
glass Petri dish
Petri diameter 9cm



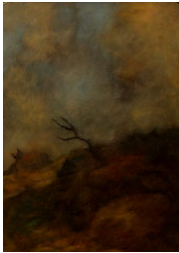
Kat Shapiro Wood
What Is Left
Bones, encaustic inlay,
glass Petri dish
Petri diameter 9.5cm

PETER JORDAN

Peter Jordan's jewel-like paintings suggest a numinous presence. He captures private moments of intensity and stillness, where something is waiting to happen and there is space to wonder about the mysteries of being alive.



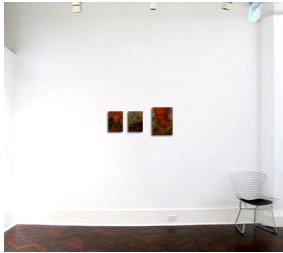
Peter Jordan
North Star
29 x 21cm
oil on board



Peter Jordan
Starless
acrylic on board
29 x 21cm



Peter Jordan
Wormwood
40 x 31cm
acrylic on canvas



artworks in situ on 3.7m wall



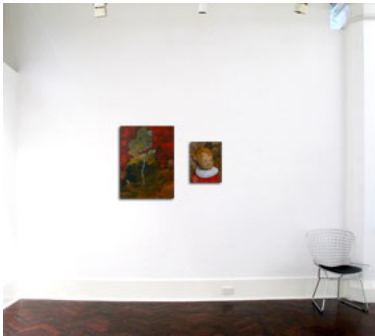
Installation image



Peter Jordan
Wormwood Return
Acrylic on canvas
80 x 60 cm



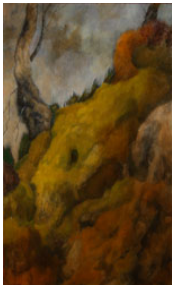
Peter Jordan
On and On
45 x 35cm
acrylic on canvas



artworks in situ on 3.7m wall



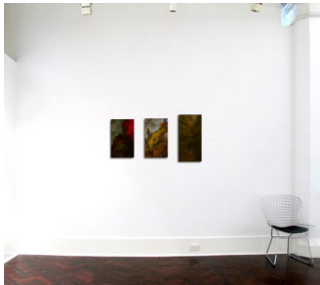
Peter Jordan
Endtyme
acrylic on canvas
50 x 30cm



Peter Jordan
The Last Road
acrylic on board
50 x 30cm



Peter Jordan
Aurora
oil on board
61 x 30cm



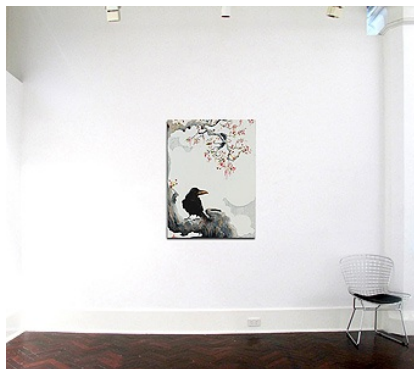
artworks in situ on 3.7m wal

JOSH ROBBINS

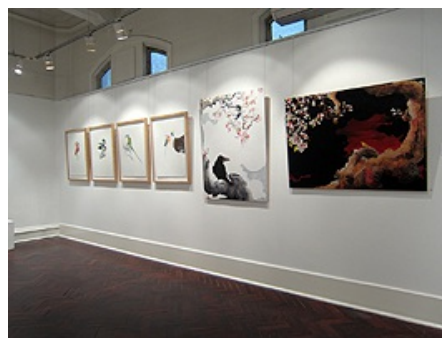
With a pure love of the aesthetic, Josh Robbins' work tests the way lines are, how they undulate. How a brushstroke turns. How colours fade into each other. Or don't. A drip in the right place. The beauty of distortion.



Josh Robbins
Looking to the..
oil floor stain and charcoal
on plywood
122 x 90cm



artwork in situ on 3.7m wall



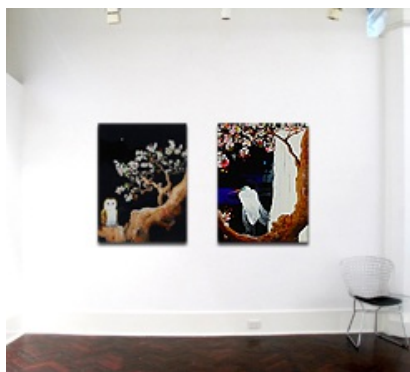
Installation image



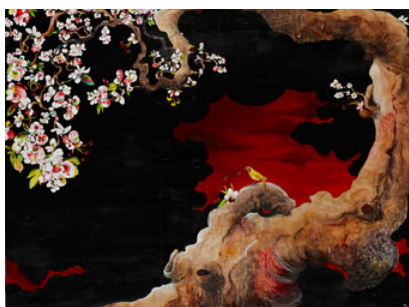
Josh Robbins
Springtime at Night
oil floor stain and charcoal
on plywood
122 x 90cm



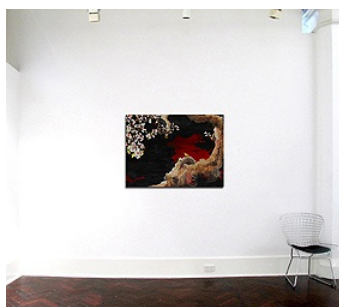
Josh Robbins
Egret & Friend
oil floor stain and charcoal
on plywood
122 x 90cm



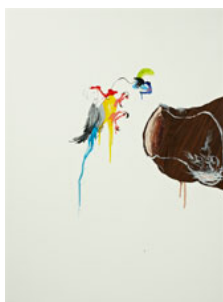
artworks in situ on 3.7m wall



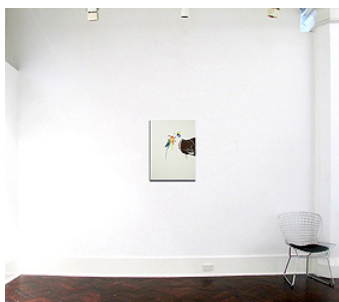
Josh Robbins
is this my new place?
oil floor stain and charcoal
on plywood
90 x 122cm



artwork in situ on 3.7m wall



Josh Robbins
Daddy's Home
oil on paper
76 x 56cm (paper size)



artwork in situ on 3.7m wall



Installation image



Josh Robbins
Princess Parrot
oil on paper
76 x 56cm (paper size)



Josh Robbins
Red Bishop
oil on paper
76 x 56cm (paper size)



Josh Robbins
Wood Duck
oil on paper
76 x 56cm (paper size)



Installation image

EMILY VALENTINE BULLOCK

Using feathers as her paint, Emily Valentine Bullock creates sculptures that stimulate the viewer with the uncomfortable nature of the feather, and question the value of classification – pet or pest, valued or worthless, beautiful or plain?



Emily Valentine Bullock
Golden Haired Dashed
Golden Pheasant Rooster feathers and mixed media
33 x 45 x 23cm



Emily Valentine Bullock
Pair of Cattleburra 2011
Kookaburra feathers and mixed media
33 x 26 x 19cm (sitting), 24 x 31 x 19cm (lying)



Emily Valentine Bullock
Myna Squadron
Indian Myna-Feathers and mixed media
17 x 15 x 7cm (each unit)
12 units in total
Photographer of artworks: John Lees



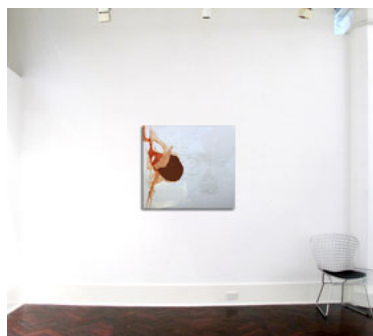
Emily Valentine Bullock
Pugcock
peacock feathers and mixed media
46 x 58 x 32cm

LAWRENCE WONG

Influenced by the gestural abstraction of Australian artist Peter Upward, Lawrence Wong's paintings are specifically connected to the expression of energy that flows in the body as the mark making occurs.



Lawrence Wong
Exhale 1
acrylic on canvas
92 x 102cm

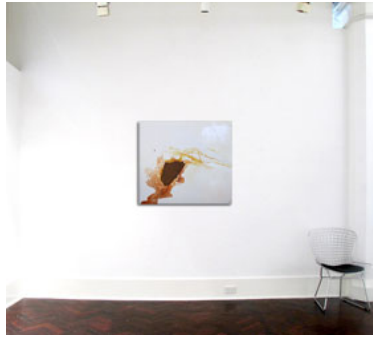


in situ on 3.7m wall





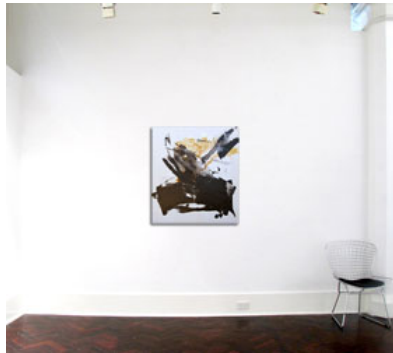
Lawrence Wong
Exhale 2
acrylic on canvas
92 x 102cm



in situ on 3.7m wall



Lawrence Wong
Exhale 3
acrylic on canvas
102 x 92cm



in situ on 3.7m wall



Lawrence Wong
Exhale 4
acrylic on canvas
92cm x 102cm



in situ on 3.7m wall
