

MAMI YAMANAKA
NEW WORKS
19 October - 6 November 2010

'I have been drawing my original patterns since my early teens. Starting from scribbles in a notebook in a classroom, they gradually evolved to become the main focus of my art practice. The patterns have changed over the years by reflecting my own life experience. I have always been interested in a possible connection between my pattern and the shapes of nature. I always find interesting patterns within nature as well as artificial environments, sometimes a pattern within small creatures, sometimes a pattern within a vast environment. Since migrating to Australia, my patterns have started combining memories of both the Japanese and Australian environments that I have experienced. I am exploring the connection between my patterns and particular environments and their memories within the works for this show.'

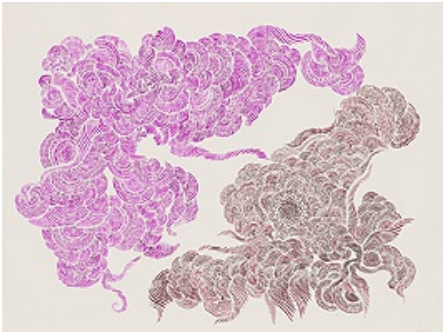
Mami Yamanaka 2010



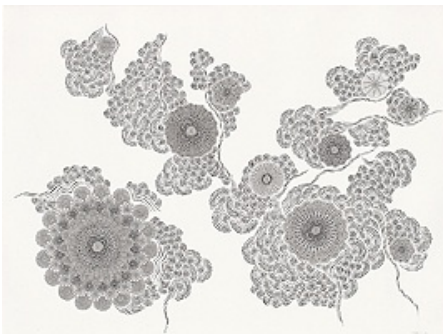
The Dreams of Plants I
gouache on paper
56 x 75cm



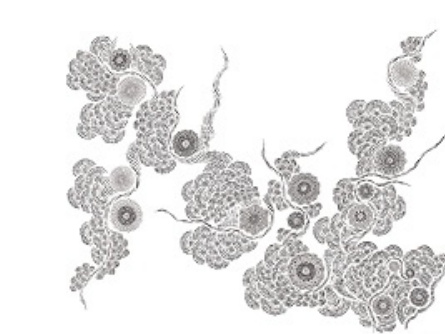
The Dreams of Plants II
gouache on paper
56 x 75cm



The Dreams of Plants III
gouache on paper
56 x 75cm



Water Memory I
pigment ink on paper
56 x 75cm



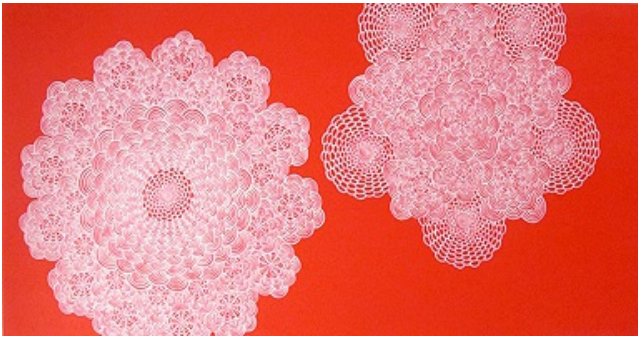
Water Memory II
pigment ink on paper
56 x 75cm



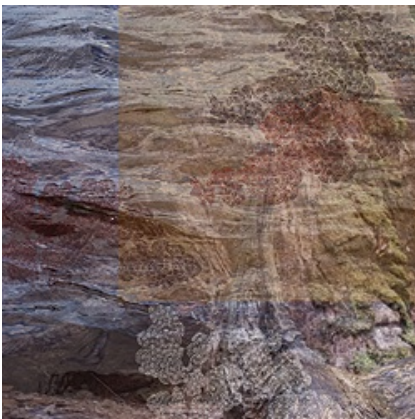
Winter 2009
pigment ink on paper
56 x 75cm



Autumn 2010
pigment ink on paper
56 x 75cm



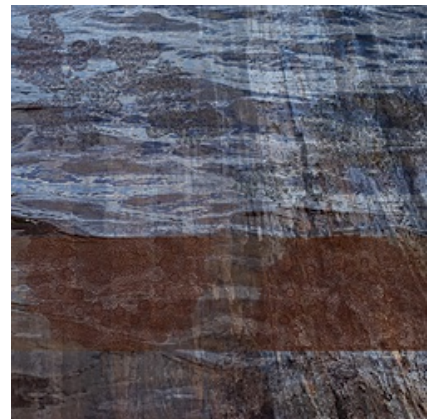
Untitled 2010
oil on linen
122 x 61cm



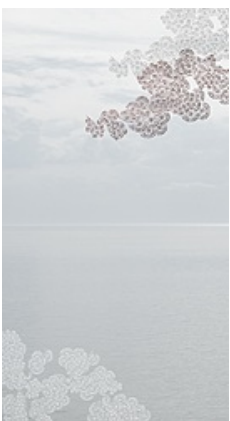
Untitled I
pigment print on rag paper
90cm x 90cm
(edition of 5)



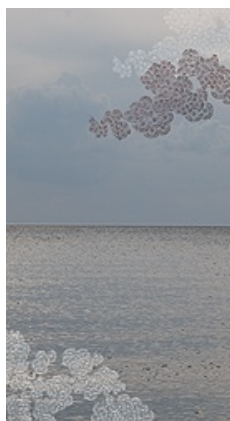
Untitled II
pigment print on rag paper
90cm x 90cm
(edition of 5)



Untitled III
pigment print on rag paper
90cm x 90cm
(edition of 5)



Line I
pigment print on rag paper
65cm x 120cm
(edition of 5)



Line II
pigment print on rag paper
65cm x 120cm
(edition of 5)