

EMMA WALKER
POLLINATION
 9-27 November 2010

For *Pollination*, Walker focuses on a series of paintings and book assemblages to investigate the metaphoric qualities of nature through the social and ecological structure of bee colonies. The geometric form of the honeycomb, with its structure of stability, serves as a relevant motif for her ideas.



Pollination 2010
 oil on linen
 160 x 180cm



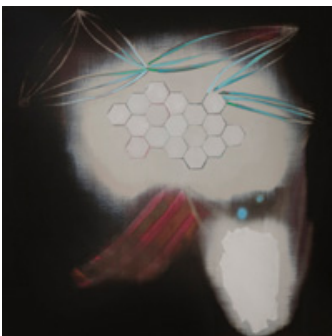
Flight Pattern 2010
 oil on linen
 132 x 152cm



Song of the Hive 2010
 oil on linen
 132 x 152cm



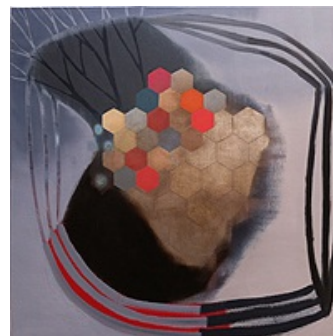
Prima Vera 2010
 oil on linen
 132 x 152cm



Delivery 2010
 oil on linen
 90 x 90cm



Honey Cells 2010
 oil on linen
 90 x 90cm



Circuit 2010
 oil on linen
 90 x 90cm



A Midsummer Night's Dream 2010
mixed media
41 x 31 x 15cm
\$1800AUD (framed in perspex box)



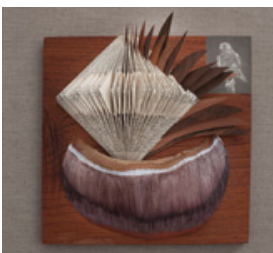
Christmas 1939 2010
mixed media
51 x 31 x 12cm
(framed in perspex box)



Oak Song 2010
mixed media
41 x 31 x 9cm
(framed in perspex box)



The Eternal Choice 2010
mixed media
41 x 31 x 11cm
(framed in perspex box)



Vigilance 2010
mixed media
31x31x15cm
\$1800AUD
(framed in perspex box)



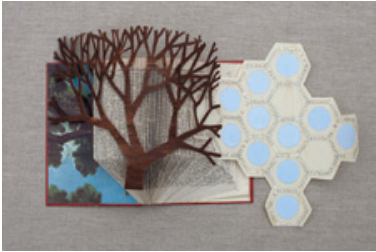
Installation view



The Pursuit of Love 2010
mixed media
41 x 31 x 15cm
(framed in perspex box)



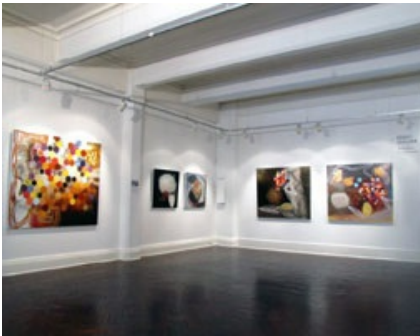
Installation view



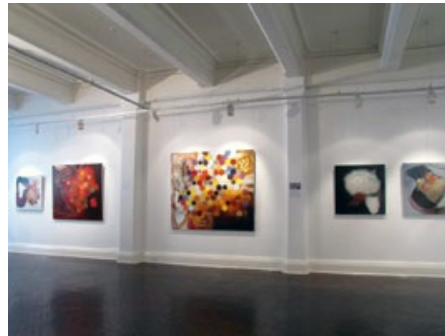
The Queen's Cross
mixed media
51 x 31 x 12cm
(framed in perspex box)



Installation view



Installation view



Installation view

