

EXHIBITIONS Mami Yamanaka *Still-Life* 5th May 2015 - 23rd May 2015



I often find myself tracing patterns of both natural and artificial environments without consciously realising I'm doing so. I think we all do it in different degrees. In my case, I collect these visual patterns - I recognise them and store them somewhere within me that form an impression or memory of the environment and experience.



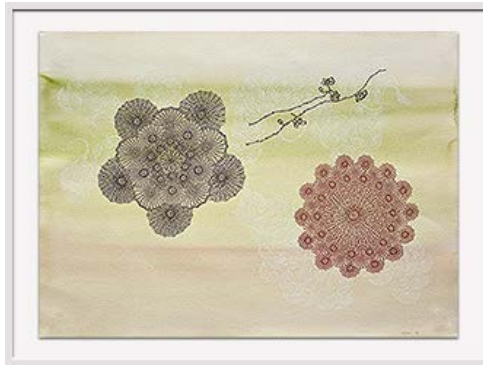
The patterns that I collect are often related to certain thoughts. For example, if I see a feather of a bird on the street as I pass by, the patterns that I recognise within the feather causes me to think of the bird that had dropped it. My thoughts wander further, and I wonder if the bird felt when its feather fell, how it may have felt, and where it then flew away to. What patterns and colours is it now creating as it joins its flock of birds in the sky within the cloud?



For this show, I am dissecting and deconstructing these fragments of memory as I try to capture the notion of fleeting visual impressions. Each work is the outcome of reflection on my inner thoughts and my inner self, as I interact with the world around me. Yamanaka, 2015.



Mami Yamanaka
Autumn I 2015
gouache, ink and pencil on rag paper
50cm x 70cm , (60 x 80cm framed)



Mami Yamanaka
Autumn II 2015
gouache, ink and pencil on rag paper
50cm x 60cm , (60 x 80cm framed)



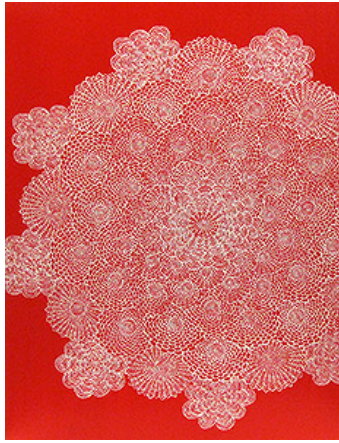
Japanese born and Melbourne based, Yamanaka deals with pattern with the same sensitivity for which traditional Japanese design is best known. Drawing in circular motions and incorporating forms that symbolise the artist's experience of migration, these intricate forms both reflect the fragility of nature and the abundance of inner experience.



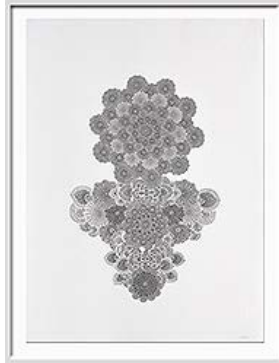
Yamanaka's work is represented within corporate and private collections in Japan, Australia, New Zealand and Hong Kong, including Crown International, The Hilton Melbourne and Art Bank. Widely exhibiting both nationally and internationally, Yamanaka was invited to exhibit at Art Basel in Switzerland and at the Southampton Art Fair in the US, both in 2013. Her works also travelled to SCOPE Art Fairs in Miami, Basel, Abu Dhabi and Istanbul. She held her first solo exhibition at FLG in 2004, coinciding with the completion of her Master of Fine Art degree at RMIT University.

[MAMI YAMANAKA PROFILE](#)
[DOWNLOAD BIO / CV \(PDF\)](#)

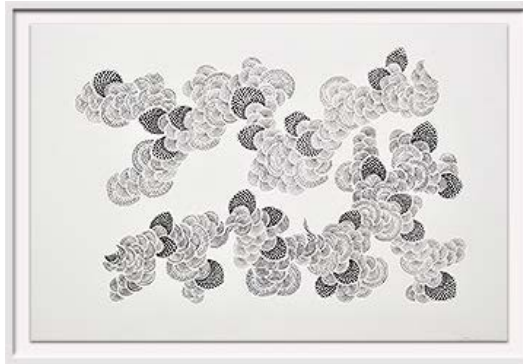
JOIN OUR MAILING LIST



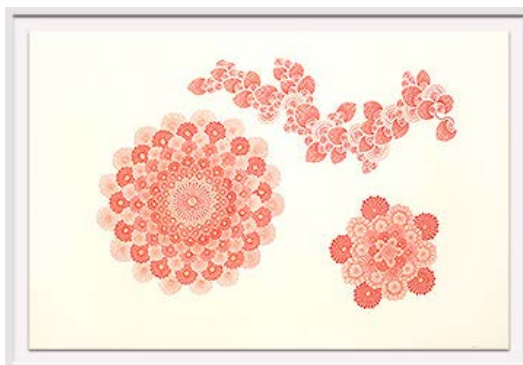
Mami Yamanaka
Still - Life 2015
oil on linen
103cm x 76cm



Mami Yamanaka
Continuation 2015
ink on rag paper
76cm x 56cm (85.7 x 65.9cm framed)



Mami Yamanaka
Leaf Vein 2015
gouache on rag paper
67cm x 101cm , (76.7 x 110.7cm framed)



Mami Yamanaka
Rejoicing 2015
ink on rag paper
67cm x 101cm , (76.7 x 110.7cm framed)



Mami Yamanaka
Pattern I 2015
ink on rag paper
38cm x 38cm , (46.8 x 45cm framed)



Mami Yamanaka
Pattern II 2015
ink on rag paper
38cm x 38cm , (46.8 x 45cm framed)



Mami Yamanaka
Pattern III 2015
ink on rag paper
38cm x 38cm , (46.8 x 45cm framed)



Mami Yamanaka
Pattern IV 2015
ink on rag paper
38cm x 38cm , (46.8 x 45cm framed)



Mami Yamanaka
Pattern V 2015
ink on rag paper
38cm x 38cm , (46.8 x 45cm framed)

137 FLINDERS LANE MELBOURNE 3000 TUES-FRI 11AM TO 6PM, SAT 11AM TO 5PM or 3PM on last weekend for de-install + 61 3 9654 3332 INFO@FLG.COM.AU