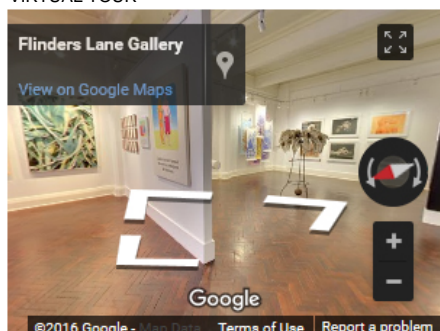


## EXHIBITIONS *Exploration 16* 31st May 2016 - 18th June 2016

### VIRTUAL TOUR



FLG presents our highly anticipated annual showcase of emerging and unsigned artists. Created to provide a platform for emerging artists to display their work in a commercial setting, Exploration is tightly curated to present the works by artists who are dedicated to their practices and actively creating quality art pieces that spark interesting dialogue. Working across the mediums of drawing, painting, printmaking, photography, sculpture and video and now in its 16th year, Exploration once again offers up an exciting new group of artists to support & nurture.



#### Alex Sanson

Alex Sanson is a sculptor living and practicing in Taradale in rural central Victoria. His passion for sculpture and metal work started in the early 90's with a series very much inspired by early childhood experiences of Calder's mobiles and 'circus'. Since then he has developed a diverse practice including kinetic and other sculpture, large scale outdoor installations and architectural and domestic design and lighting. Alex is particularly fascinated by delicate balance, equilibrium and pattern in nature and in human experience. His sculptural works reflect this captivation with interactive and kinetic elements that move seamlessly between coordinated movement and chaos.

Alex has undertaken various large scale installations including at the Incinerator in Moonee Ponds in 2004, Federation Square in 2006 and 2007 for Melbourne Fringe Festival, WOMAD in Adelaide in 2003 and many



Exploration 16  
*Myles Pedlar - Illusory* 2015  
archival print on photographique rag, 4/5 eds remain  
59cm x 84cm framed \$950, unframed \$700



Exploration 16  
*Myles Pedlar - Bodylink* 2016  
archival print on photographique rag, edition of 5  
59cm x 84cm framed \$950, unframed \$700



Exploration 16  
*Myles Pedlar - Detach* 2016  
archival print on photographique rag paper, edition of 5  
59cm x 84cm framed \$950, unframed \$700 AUD



Exploration 16  
*Myles Pedlar - Balance* 2016  
archival print on photographique rag, edition of 5  
59cm x 84cm framed \$950, unframed \$700



Exploration 16  
*Myles Pedlar - Dream State* 2016  
archival print on photographique rag, 4/5 eds remain  
59cm x 84cm framed \$950, unframed \$700 AUD



Exploration 16  
*Myles Pedlar - Hollow* 2015  
archival print on photographique rag, 4/5 eds remain  
59cm x 84cm framed \$950, unframed \$700 AUD

outdoor music and arts festivals.

Alex has been selected for exhibitions including The Lost Ones Gallery in Ballarat, Horsham Regional Art Gallery, Lot19 gallery in Castlemaine (winner of the Tonks Sculpture prize in 2014) and Yering Station Sculpture Award (winner of the major prize in 2015). Alex also has commissioned work installed at several schools including Merri Creek, Brunswick South, Brunswick South West, Melbourne German International School, at restaurants including Wabi Sabi Salon, Yea Rose Garden, and an interactive work at SCOPE Centre for people with cerebral palsy and in private collections.



#### Myles Pedlar

*By abstracting the human form, my work aims to give an authentic and unconventional representation of nakedness, whilst visually depicting a warped perception of ones own physical form. The abstraction throughout my imagery manifests in the contorted forms. Key themes explored throughout my work are gender, sexuality and body image. With a desire to challenge the constricting societal norms of these key themes, I shape harmonious and often grotesque forms. This allows myself and my subjects to have control over how the human form is represented in our society.*

Still in the first few years of his practice, Pedlar graduated with a Bachelor of Photography from RMIT University in 2015. He won the Photography Prize at Brunswick Street Gallery in 2015, and was the winner of the Southern Coast Art Prize in both 2013 and 2012. In 2015 his work was featured on the cover of Catalyst (issue 5, volume 7) RMIT's Student Magazine for their gender issue.



#### Emma Michaelis

*My practice is concerned with producing large-scale coloured pencil on paper drawings which seek to uncover the human relationship to parameters of physicality and the conscious/unconscious link between self and body. For Exploration 16 I have been working on a new series which will be located in the space in a large-scale installation of both free hanging and framed works. With a focus on female subjectivity, my works ask the viewer to redefine their ideas of the location of being, using surface as a juncture between the viewer and the image, bodily constructing the works life sized, questioning individual and shared experiences of being*



Exploration 16  
Martin Tighe 'Glow' 2016  
acrylic on linen  
46cm x 38cm  
\$2,500 AUD



Exploration 16  
Martin Tighe 'Still Life One' 2016  
acrylic on linen  
36cm x 35cm  
\$1,750 AUD



Exploration 16  
Martin Tighe 'Still Life Three' 2016  
acrylic on linen  
36cm x 35cm  
\$1,750 AUD



Exploration 16  
Martin Tighe 'Composition in Blue' 2016  
acrylic on linen  
46cm x 38cm  
\$2,500 AUD



Exploration 16  
Martin Tighe 'Dusk' 2016  
acrylic on linen  
33cm x 38cm  
\$2,500 AUD



Exploration 16  
Martin Tighe 'Still Life Two' 2016  
acrylic on linen  
36cm x 35cm



Exploration 16  
Martin Tighe 'Where are you?' 2016  
acrylic on linen  
40cm x 55cm  
\$2,500 AUD



through reconstruction of the figure.

Emma completed a Bachelor of Design Arts (Visual Arts) from the Academy of Design Australia in 2014, and a Bachelor of Fine Arts (Honours) at RMIT University in 2015. She has recently returned from a three month GlogauAIR Arts Residency in Berlin, and has exhibited extensively in Melbourne over the last four years. She was a study tour recipient in 2013 for London and Paris placement facilitated by the Academy of Design, and in 2015 was commissioned to make works for the L'Oreal Professional Fashion Week.



#### Mary Mavroudis

Mary Mavroudis engages photography, video and stop motion animation to explore the spectrum between embodiment and displacement and the phenomenological affect within one's environment. *Get a Grip* is a 3-channel video projection loop and the culmination of her 4<sup>th</sup> year honours project at RMIT. The project explored the tension within a body when placed in an intense engagement with artificial environments, investigating how our association with place can affect our individual consciousness. A central interest in her practice is the use of spatiality and the repetition of gesture to create a tense viewing experience, exploring the potential of 2-dimensional mediums to transpose phenomenological affect to the viewer.

Mavroudis completed a Certificate IV in Multimedia 2001, a Bachelor of Fine Art Photography in 2011 and a Bachelor of Fine Art Honours in 2015, all through RMIT University. She has exhibited in group exhibitions over the last five years, and was a finalist in the 2012 Photography Prize through Brunswick Street Gallery. In 2016 she was featured in Art Collector's Undiscovered Issue presenting artists on the rise.



#### Kai Wasikowski

Kai Wasikowski's practice focuses on the ideological notion of 'nature' and its aestheticization within the context of the Anthropocene. Recently Wasikowski has been exploring this notion through the materiality of lenticular photography, a 3D medium often associated with depictions of paradise, wilderness and tourist mementos. For *Exploration 16* Wasikowski has employed the optical qualities of lenticular photography to create hyper-coloured 3D photographs of commonplace garden foliage. Positioned somewhere



#### Exploration 16

Michele Lane 'Sacred Precincts Triptych' 2016  
etching on tinted mulberry paper  
138cm x 64cm multiple colour variations available  
\$1,700 AUD



#### Exploration 16

Michele Lane 'Sacred Precincts 1' 2016  
etching on mulberry paper  
138cm x 76cm 6 colour variations edition 4  
\$580 AUD



#### Exploration 16

Michele Lane 'Sacred Precincts 2' 2016  
etching on mulberry paper  
138cm x 64cm 6 colour variations edition 4  
\$580 AUD



#### Exploration 16

Michele Lane 'Sacred Precincts 3' 2016  
etching on mulberry paper  
138cm x 64cm  
\$580 AUD

in-between real and rendered space, these highly synthetic depictions of flora present the idea of nature as an inherently subjective and constructed experience. Calling upon the alluring qualities of 3D depth Wasikowski's work questions the human desire for sensory immersion, particularly in nature's picturesque, and the subsequent feelings of alterity and loss that precede it.

Wasikowski is currently completing his Bachelor of Visual Arts (Honours) at the Sydney College of the Arts. He has held and been a part of numerous solo and group exhibition throughout Sydney, Melbourne and Canberra over the last few years, including exhibiting at The Other Art Fair in Sydney in 2015.



### Martin Tighe

Melbourne artist Martin Tighe has built a career focusing on stories important to Australia's culture and identity. His work has examined wide-ranging subjects from Ronald Ryan, Tom Wills, Simpson's Donkey and Picnic at Hanging Rock to Australian Rules Football, landscapes, still life works and portraiture. Throughout his career Martin has used many different media to realise his art. These include traditional materials, oils, acrylics and bronze. Found objects such as scoreboard numbers, timber off-cuts and flat iron gathered from wheat farms have also been used.

Tighe has exhibited annually throughout Sydney and Melbourne since 1996 with both group and solo exhibitions. Tighe was a finalist in the Eutick Still Life Award (2016 & 2015) and in 2015 was also a finalist in the Tattersalls Club Art Prize, the Gallipolli Art Prize and the NAB Flanagan Art Prize. In 2014 he was a finalist in the prestigious Archibald Prize with his portrait of Emma Ayres, and in 2013 was selected to hang in the Salon de Refuses, S.H.Erwin Gallery, Sydney. Tighe also hung in a group exhibition titled 'Spirit of Football' held at the National Gallery of Victoria in 2004.



### Sarah Randall



Exploration 16  
 Alex Sanson - *Distant Ripple* 2014  
 carbon steel, stainless steel, bearings and pigment  
 180cm x 90cm



Exploration 16  
 Alex Sanson - *Murmuring* 2016  
 carbon steel, stainless steel, ostrich feathers, bearings and pigment  
 170cm x 110cm Winner of the 2015 Yering Station Sculpture Award



Exploration 16  
 Kai Wasikowski *'Breathing Data'* 2016  
 archival pigment print with lenticular lens  
 165cm x 115cm edition of 5 + 1 AP  
 \$4,750 AUD



Exploration 16  
 Kai Wasikowski *'Human Nature'* 2016  
 archival pigment print with lenticular lens  
 165cm x 115cm edition of 5 + 1 AP  
 \$4,750 AUD



*These painted objects examine the relationships between people (family) and their objects (tableware). They act as a metaphor for the individual and speak collectively to the notion of communion. Through my experience, the act of eating together at mealtimes is ever present. When the individual plates are brought together, the family comes together; and so these works facilitate the integration of both object and person. This series of work is an intimate portrayal of personal objects that speak of my relationship to my family. It is a testament to my own feelings and emotions I hold for each of them, being a silent exchange of empathy and reflection. The unremarkable may secretly harbour the extraordinary, as humble everyday objects provide a way through which we can understand one another... and remember the ones we have lost.*

Randall completed a Bachelor of Creative Arts in Wollongong in 2013, and a Master of Fine Arts at RMIT in 2015. She is currently undertaking a Grad Certificate of Arts in Art History at the University of Melbourne. She has exhibited in NSW and Melbourne since 2008, in 2013 she was awarded the \$1000 William Fletcher Foundation Grant and awarded the RMIT Community Award in 2015 coinciding with her Masters.



#### Michele Lane

Michele Lane is a visual artist based in both Adelaide and Kangaroo Island. She works across printmaking and installation art, exploring the rich but conflicted interface between humanity and its planet. Her artwork oscillates between large format, highly detailed etchings of landscape and delicate renderings of 'small nature' in the refined manner of still life.

*The Sacred Precincts print series explores how our vision of landscape is refracted through many lenses – both conceptual and real. By considering the gaze of a contemporary Chinese tourist upon the Australian outback, this artwork examines how global travellers comprehend new places. Drawing from the traditional Chinese 'Water-Mountain' painting aesthetic, these etchings embody the Chinese concept of 'Nature as balanced perfection'. By contrast, the multi-coloured panels hint at the ephemeral photographic imagery now synonymous with the contemporary tourist experience. Sacred Precincts imagines the visitor's view of a panoramic Australian landscape where Chinese shanshui meets 'iphoneography'.*

Michele attended the Bapea Art School in Adelaide from



Exploration 16  
Kai Wasikowski 'Below The Mist' 2016  
archival pigment print with lenticular lens  
157cm x 115cm edition of 5 + 1 AP  
\$4,750 AUD



Exploration 16  
Emma Michaelis 'Holding - Mother's Burden' 2016  
coloured pencil on paper  
185cm x 130cm  
\$5,500 AUD



Exploration 16  
Emma Michaelis 'Face #1 Sea Green' 2016  
coloured pencil on paper  
85cm x 63cm  
\$1,100 AUD



Exploration 16  
Kai Wasikowski 'Looking With A Forked Tongue' 2016  
archival pigment print with lenticular lens  
165cm x 115cm edition of 5 + 1 AP  
\$4,750 AUD



Exploration 16  
Emma Michaelis 'Sitting Rose' 2016  
coloured pencil on paper  
167cm x 126cm, framed  
\$4,000 AUD



Exploration 16  
Emma Michaelis 'Face #2 Venetian' 2016  
coloured pencil on paper  
85cm x 65cm, framed  
\$1,100 AUD

2004 - 2009, and in 2015 completed her Bachelor of Visual Art and Applied Design at the Adelaide College of the Arts, majoring in Printmaking. She has exhibited throughout Adelaide and Kangaroo Island for the past five years.



### Anthony Bartok

Anthony Bartok is a Sydney based painter and printmaker with over 10 years experience exhibiting in commercial galleries and ARIs in Sydney, Melbourne and Queensland. He is a 2016 graduate of the National Art School where he majored in printmaking. Born in Cherrybrook in Sydney's suburban Hills District, Bartok grew up looking at art exclusively through books that eventually formed the basis of his first solo show at the age of 19 and over the next few years produced work exploring what it means to become an artist and the differences between 'high' and 'low' art. Since then Bartok has shifted stylistically as often as he has conceptually, but always approaching his work from a distance and with the use of photographic source material.

*I'm interested in contributing to a conversation as an artist. Using a visual language to express philosophical observations on contemporary life is an enjoyable struggle that keeps me curious and a little naive towards accepted 'truths' in society. My current work questions many of these truths that we take for granted in the modern West. Full-time work, standardised education, the industrialisation of food, empty lives defined by consumption and entertainment and the divide between rich and poor. It is true that there are many things to celebrate but they have come about because of society's ability to question the worst aspects of itself. Humour is criticisms big Trojan horse, and with these new works I've used a lot of humour to wrap my observations in. Adopting the simple cartoon line and language of childrens colouring-in books I can depict complex issues simply and lightly.*



Exploration 16  
Emma Michaelis 'A Smile' 2016  
coloured pencil on paper  
85cm x 65cm , framed  
\$1,100 AUD



Exploration 16  
Sarah Randall '#32 Oriental' 2016  
oil on wood  
30cm x 30cm RESERVED  
\$600 AUD



Exploration 16  
Sarah Randall '#26 Rooster' 2016  
oil on wood  
30cm x 30cm  
\$600 AUD



Exploration 16  
Sarah Randall '#23 Stoneware' 2016  
oil on wood  
20cm x 20cm RESERVED  
\$400 AUD



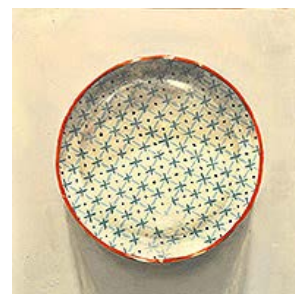
Exploration 16  
Sarah Randall '#22 Polish Plate' 2016  
oil on wood  
60cm x 50cm



Exploration 16  
Sarah Randall '#25 Strasbourg' 2016  
oil on wood  
30cm x 30cm  
\$600 AUD



Exploration 16  
Sarah Randall '#27 Sushi Blue' 2016  
oil on wood  
25cm x 30cm  
\$550 AUD



Exploration 16  
Sarah Randall '#28 Geometirc' 2016  
oil on wood  
20cm x 20cm  
\$400 AUD



## Ross Vaughan

*Is painting still relevant in the digital age? Or is it redundant, a relic of a bygone era? I'm interested in (and terrified of) the unstoppable rise of digital culture, and it's effects on traditional culture, and I explore these ideas through my practice. In this series of paintings I begin to experiment with digitally manipulated images, moving pixels around with complex algorithmic processes that I could never hope to fathom. Then, through a millennia-old process of applying pigment to wood, they become manually manipulated images; disassembled and reassembled ideas of 'image capture' and representation. The smooth, mounted boards and matte paint surface disguise the 'artist's hand' and flatten the images, further reconnecting them to their digital origins.*

Ross Vaughan graduated with a Bachelor of Fine Art from RMIT, and has exhibited widely throughout Melbourne within the last six years. In 2015 he was a finalist in the Manning Art Prize, Manning Regional Gallery, Taree, NSW, and in the Norma Bull Portraiture Scholarship run through the Victorian Artist's Society. In 2014 he participated in the group exhibition Borderland, held at the Club Náutico De Zaragoza and MECA Mediterráneo Centro Artístico, Almeria, Spain.

[EXPLORATION 16 PROFILE](#)  
[DOWNLOAD BIO / CV \(PDF\)](#)

JOIN OUR MAILING LIST



Exploration 16  
Sarah Randall 'Kmart Dip' 2016  
oil on wood  
40cm x 40cm  
\$750 AUD



Exploration 16  
Sarah Randall 'Gran' 2016  
oil on wood  
30cm x 30cm  
\$600 AUD



Exploration 16  
Sarah Randall 'Floral Polish' 2016  
oil on wood  
20cm x 20cm  
\$400 AUD



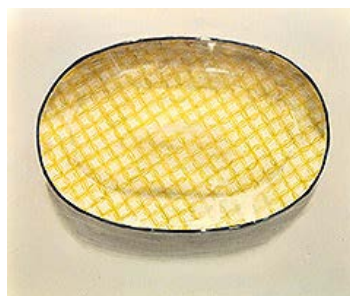
Exploration 16  
Sarah Randall '37' 2016  
oil on wood  
15cm x 15cm  
\$300 AUD



Exploration 16  
Sarah Randall 'Peasants' 2016  
oil on wood  
30cm x 30cm  
\$600 AUD



Exploration 16  
Sarah Randall - #42 Lily 2016  
oil on wood  
40cm x 40cm  
\$750 AUD



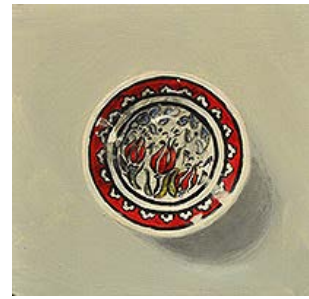
Exploration 16  
Sarah Randall 'Gyoza' 2016  
oil on wood  
25cm x 30cm  
\$550 AUD



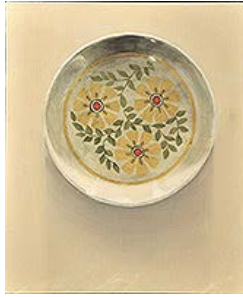
Exploration 16  
Sarah Randall 'Holly's Dinner Plate' 2016  
oil on wood  
40cm x 40cm  
\$750 AUD



Exploration 16  
*Sarah Randall - #43 Royal Doulton Blue* 2016  
 oil on wood  
 40cm x 40cm  
 \$750 AUD



Exploration 16  
*Sarah Randall ' #24 Moroccan Red'* 2016  
 oil on wood  
 15cm x 15cm  
 \$300 AUD



Exploration 16  
*Sarah Randall ' #29 (Op-Shop)'* 2016  
 oil on wood  
 30cm x 25cm  
 \$550 AUD



Exploration 16  
*Sarah Randall ' #33 Peacock'* 2016  
 oil on wood  
 30cm x 30cm  
 \$600 AUD



Exploration 16  
*Sarah Randall - #29 Chrississ Cat* 2016  
 oil on wood  
 40cm x 40cm



Exploration 16  
*Sarah Randall - #40 Eleanor* 2016  
 oil on wood  
 40cm x 40cm  
 \$750 AUD



Exploration 16  
*Sarah Randall - #44 Lemonade* 2016  
 oil on wood  
 20cm x 25cm  
 \$450 AUD



Exploration 16  
*Sarah Randall - #45 Lemonworld* 2016  
 oil on wood  
 20cm x 25cm







Exploration 16  
*Sarah Randall - #41 Ruby* 2016  
 oil on wood  
 40cm x 40cm  
 \$750 AUD



Exploration 16  
*Mary Mavroudis 'Get A Grip'* 2016  
 3 channel HD video projection  
 cm x cm edition of 3, starting from  
 \$1,100 AUD



Exploration 16  
*Ross Vaughan 'Entropy Generator #1'* 2016  
 oil on board  
 50cm x 50cm  
 \$1,000 AUD



Exploration 16  
*Ross Vaughan 'Entropy Generator #2'* 2016  
 oil on board  
 50cm x 50cm  
 \$1,000 AUD



Exploration 16  
*Ross Vaughan 'Entropy Generator #3'* 2016  
 oil on board  
 50cm x 50cm  
 \$1,000 AUD



Exploration 16  
*Ross Vaughan 'Entropy Generator #4'* 2016  
 oil on board  
 50cm x 50cm





Exploration 16  
 Ross Vaughan 'Entropy Generator #6' 2016  
 oil on board  
 50cm x 50cm  
 \$1,000 AUD



Exploration 16  
 Ross Vaughan 'Entropy Generator #9' 2016  
 oil on board  
 50cm x 50cm  
 \$1,000 AUD



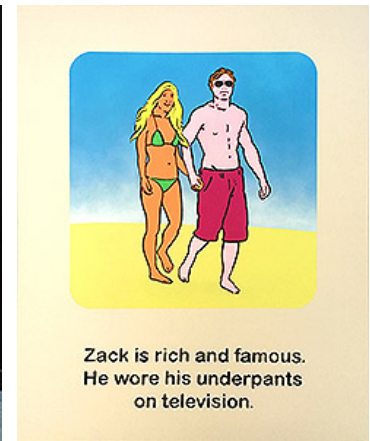
Exploration 16  
 Ross Vaughan 'Entropy Generator #5' 2016  
 oil on board  
 50cm x 50cm  
 \$1,000 AUD



Exploration 16  
 Ross Vaughan 'Entropy Generator #7' 2016  
 oil on board  
 50cm x 50cm  
 \$1,000 AUD



Exploration 16  
 Ross Vaughan 'Entropy Generator #8' 2016  
 oil on board  
 102cm x 102cm  
 \$1,600 AUD



Exploration 16  
 Anthony Bartok - *Zack is Rich and Famous* 2016  
 acrylic on canvas  
 137cm x 107cm  
 \$1,600 AUD



Exploration 16



Exploration 16



**Anthony Bartok 'Tim Has Many Expensive Toys' 2016**  
 solvent release on canvas  
 21cm x 16cm  
 \$190 AUD



**Exploration 16**  
**Anthony Bartok 'Ben & Amy Make Dinner..' 2016**  
 solvent release on canvas  
 21cm x 16cm  
 \$190 AUD

**Anthony Bartok 'Lee & James Meet For Coffee' 2016**  
 solvent release on canvas  
 21cm x 16cm  
 \$190 AUD



**Exploration 16**  
**Anthony Bartok 'Big Factories...' 2016**  
 solvent release on canvas  
 21cm x 16cm



**Exploration 16**  
**Anthony Bartok 'Everyone Is Very Excited..' 2016**  
 solvent release on canvas  
 21cm x 16cm  
 \$190 AUD



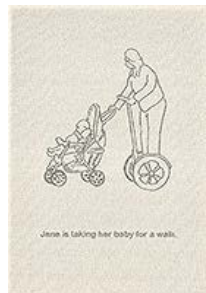
**Exploration 16**  
**Anthony Bartok 'Carlos Can Not See...' 2016**  
 solvent release on canvas  
 21cm x 16cm  
 \$190 AUD



**Exploration 16**  
**Anthony Bartok 'David Is Very Tired...' 2016**  
 solvent release on canvas  
 21cm x 16cm  
 \$190 AUD



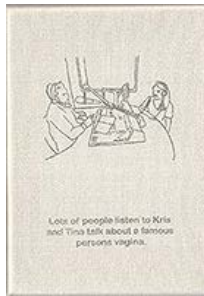
**Exploration 16**  
**Anthony Bartok 'Everyone Is Trying...' 2016**  
 solvent release on canvas  
 21cm x 16cm  
 \$190 AUD



**Exploration 16**  
**Anthony Bartok 'Jane Is Taking Her Baby...' 2016**  
 solvent release on canvas  
 21cm x 16cm  
 \$190 AUD



**Exploration 16**  
**Anthony Bartok 'Kelly & Bruce...' 2016**  
 solvent release on canvas  
 21cm x 16cm  
 \$190 AUD



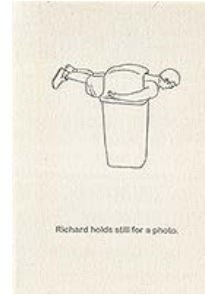
Exploration 16  
**Anthony Bartok 'Lots of People Listen...'** 2016  
 solvent release on canvas  
 21cm x 16cm  
 \$190 AUD



Exploration 16  
**Anthony Bartok 'Marcus is Now A Photographer'** 2016  
 solvent release on canvas  
 21cm x 16cm



Exploration 16  
**Anthony Bartok 'Sale!'** 2016  
 solvent release on canvas  
 21cm x 16cm  
 \$190 AUD



Exploration 16  
**Anthony Bartok 'Richard Holds Still For a Photo'** 2016  
 solvent release on canvas  
 21cm x 16cm  
 \$190 AUD



Exploration 16  
**Anthony Bartok 'Sam Watches A Funny Cat Video'** 2016  
 solvent release on canvas  
 21cm x 16cm



Exploration 16  
**Anthony Bartok 'The Children All Learn...'** 2016  
 solvent release on canvas  
 21cm x 16cm  
 \$190 AUD



Exploration 16  
**Anthony Bartok 'Oops Tracy...'** 2016  
 solvent release on canvas  
 21cm x 16cm  
 \$190 AUD



Exploration 16  
**Anthony Bartok 'Chloe is so angry about war...'** 2016  
 acrylic on laser etched wood panel  
 50cm x 40cm  
 \$750 AUD



137 FLINDERS LANE MELBOURNE 3000 TUES-FRI 11AM TO 6PM, SAT 11AM TO 5PM or **3PM on last weekend for de-install** + 61 3 9654 3332 [INFO@FLG.COM.AU](mailto:INFO@FLG.COM.AU)