

EXHIBITIONS Emerging Artist Exhibition *Exploration 15* 16th June 2015 - 11th July 2015

The Winner of the Annual FLG Emerging Artist Award is Michael Gromm. Michael will be holding a solo exhibition with FLG in 2016. FLG presents our highly anticipated annual showcase of emerging and unsigned artists. Exploration was created to provide a platform for emerging artists to successfully exhibit their art within a commercial gallery context. A tightly curated selection of artists practicing across the mediums of painting, drawing, sculpture, installation and video art are presented. This year's selected artists are:

Drasko Boljevic

[Artist Bio Artist CV](#)



Ringišpil: Collaging realities depicts the middle place between leaving and arriving, long lost memories (real or imagined), and recently acquired ones. Replica socialist architecture buildings from Zagreb, former Yugoslavia, project reinvented childhood memories from a disappeared country. The buildings act as a link between my personal past and present and represent a portal to a possible different reality. This installation is thought of as homage to a new era, celebrating possibilities and the constant search for new discoveries within our technological world. The work can be better viewed with one eye closed, inciting to set on a journey through the eye of a camera, thus questioning what is real.

Thomas Bowman

[Artist Bio Artist CV](#)



I explore the subconscious mind, the individual and relationships. Everything I make is a narrative, and the viewer's subconscious mind will somehow discover it and connect it to their own lives and experiences. It is a very fresh and rewarding way for me to connect with other people through my art. Some ideas and emotions just can't be properly communicated via language and I believe art can bridge that gap. My inspiration comes from many places, but one particular example is the works of Shaun Tan. His ability to stir emotion and communicate through imagery and narrative with or



Exploration 15

Tania Gioffre. The Hunted - My Pulse a Rhythm to Deafen 2014
archival pigment ink on Museo silver rag
40cm x 50cm framed, 7 of 10 ed.s available.



Exploration 15

Tania Gioffre. The Hunted - Hunted, A Siege Silent 2014
archival pigment ink on Museo silver rag
40cm x 50cm framed, edition of 10.

without text is extraordinary.

Tania Gioffre

[Artist Bio](#) [Artist CV](#)



I am drawn to the darker side of the human condition, the battles of the mind and the vulnerabilities of the heart that go unnoticed as a result of the brave faces and bright smiles worn as armour. This body of work seeks to create a landscape of the mind, in which I explore the height of anxiety, the depths of despair and the struggles endured in between. Depression is a predator that has overwhelmed so many close to me with its seductive power, its ability to stalk and lay siege, and I have witnessed both the fight and the surrender to the darkness. This series is for Huey, for Anne, and for myself, and is an attempt to create beauty from the darkness within.

Michael Gromm

[Artist Bio](#) [Artist CV](#)



I have an innate fascination with what is not known, and enjoy those moments when my eyes perceive things incorrectly. Those moments, usually out of the corner of my eye, when a few shapes or movements blend together to trigger a response from my consciousness. My works delve into the unknown and form unplanned, unending puzzles; a game of charades for both me and the viewer. However, among the puzzles there exists an overarching awareness that sets the direction of my works, and strikes a fundamental balance between letting the paint do as it wants, and making it do as it is told.

Polly Hollyoak

[Artist Bio](#) [Artist CV](#)



Straddling the boundaries between abstraction and representational forms, my work explores colour, pattern and layering through the medium of painting. Borrowing freely from media imagery in our consumer culture it explores notions of consumption and desire by highlighting the volume and cacophony of imagery to



Exploration 15

Tania Gioffre. The Hunted - I Found Myself in a Forest Dark. 2014
archival pigment ink on Museo silver rag
40cm x 60cm framed, 8 of 10 ed.s available.



Exploration 15

Tania Gioffre. The Hunted - Every Cracking Branch A Monster 2014
archival pigment ink on Museo silver rag
40cm x 60cm framed, 9 of 10 ed.s available



Exploration 15

Tania Gioffre. Bel Hevi - Battle 2014
archival pigment ink on Museo silver rag
40cm x 40cm framed, 7 of 8 ed.s available.



Exploration 15

Tania Gioffre. Bel Hevi - Despair 2014
archival pigment ink on Museo silver rag
40cm x 40cm framed, edition of 8.

which we are incessantly exposed. Through cropping, juxtaposition and layering images are transformed, and the distinction between what is real and what is representational dissolves away.

Amber-Rose Hulme

[Artist Bio](#) [Artist CV](#)



Words once spoken are lost to the air. Graffiti, though less temporal, is similarly fleeting. At its creation the crisp, sweeping lines shout loudly over each other, yet as time passes the character of the buildings themselves add their voices to the crowd. As new voices are added the dialogue grows and earlier voices are silenced. With these works I seek to capture a single moment of the conversation between both the landscape and the words of many. The highly saturated areas of the image are intended to accentuate the increased volume of chatter created by the layers of graffiti on a previously quiet scene.

Wong Weng Io

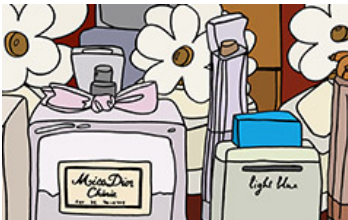
[Artist Bio](#) [Artist CV](#)



The concept of this work is formed on the idea of 'three perfections', the multi-point perspective and the Chinese saying about the perception of mountain Lu Shan which depicts the different views that one sees depending on one's positions in the mountain. Using three-dimensional Chinese characters to create a shadow version of Chinese Shan Shui ('mountain-water') painting and the exploration of spatial sensations of shapes, I seek to investigate the dual realities of the things we perceive in real life and our own perception on them.

Tegan Iversen

[Artist Bio](#) [Artist CV](#)



'Everyday Now' is a series of giclee prints of hand drawn and digitally coloured works presented in a grid formation. It is a continuation of my work 'Everyday' which I exhibited in 2014's Victorian College of the Arts Graduate Exhibition. 'Everyday Now' is a form of documentation of my life at this exact time, from the perspective of a twenty-one year old recent University graduate. It focuses on moments of my day-to-day life like brushing my teeth, helping out at my mum's party shop and having cocktails with mates. The series draws attention to aspects of the everyday that often go unnoticed and overlooked and aim to bring these to the viewer's attention.



Exploration 15

Tania Gioffre. Bel Hevi - Into The Fire 2015
archival pigment ink on Museo silver rag
40cm x 40cm framed, edition of 8.



Exploration 15

Tania Gioffre. Bel Hevi - Embers 2014
archival pigment ink on Museo silver rag
40cm x 40cm framed, edition of 8.



Exploration 15

Dan Lorrimer. Departed Trajectory 2015
hand fabricated, hydraulically pressed stainless steel
115cm x 37cm x 20 cm



Exploration 15

Dan Lorrimer. Suspended Convergence 2015

Dan Lorrimer

[Artist Bio](#) [Artist CV](#)



Fragment is an ongoing series of work that aims to explore the relationship between paper and steel through a process of repeatedly folding, cutting and working sheet metal with hydraulic pressure. The material then begins to take on the same characteristics of its paper counterpart, beginning to stress, crumple, tear and finally fragment. Through this process the work begins to explore the possibilities of form whilst highlighting the beauty of the raw materials from which the work is constructed.

Harley Manifold

[Artist Bio](#) [Artist CV](#)



Harley Manifold's work borrows heavily from the pictorial inheritance of Symbolism and Surrealism, as well as focusing on the way identity is formed in and by the environment of his figures.

Ilya Milstein

[Artist Bio](#) [Artist CV](#)



Loosely based on Sholem Aleichem's *Eternal Life*, Jacob Rodney Cohen is a video employing a mixture of HD digital footage, handdrawn animation and CGI to explore Jewish humour. Set within an ahistorical imagining of a turn-of-the century shtetl, Jacob Rodney Cohen centres on three characters – a live-action cadaver, dressed in a tachrichim death shroud, seeking a proper burial; a traditionally-animated Hasid, telling half-formed jokes while endlessly committing suicide; and a slapstick off-camera cameraman, represented by digital recreations of nervous camera flubs – shakiness, over-exposure, poor focus, etc. Taking its title from the birth name of stand-up comic Rodney Dangerfield, a paradigm of the Jewish comedian, Jacob Rodney Cohen is an unfettered consideration of the roots and persistence of humour in the Jewish tradition, and of the nature of the digital moving image.

[EXPLORATION 15 PROFILE](#)

[DOWNLOAD BIO / CV \(PDF\)](#)

hand fabricated, hydraulically pressed rusted Core-ten steel
117cm x 42cm x 15cm

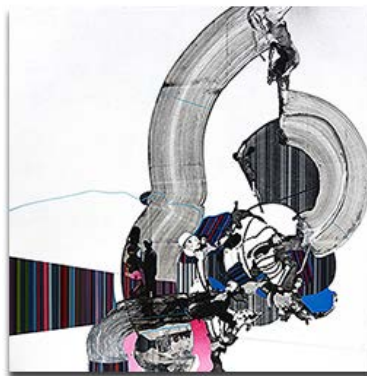


Exploration 15

Michael Grimm. Relic Premonitions 2015

oil and acrylic on canvas

137cm x 137cm

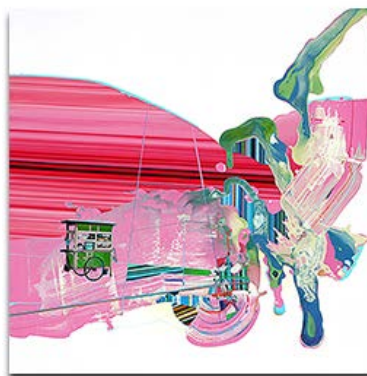


Exploration 15

Michael Grimm. Hitchcock Signal 2015

oil and acrylic on canvas

140cm x 140cm



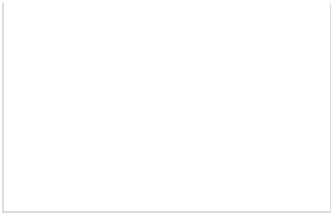
Exploration 15

Michael Grimm. Kaki Lima (Five Feet) 2015

oil and acrylic on canvas

140cm x 140cm

JOIN OUR MAILING LIST



Exploration 15
Michael Gromm. Killer Whale Kubrik Codes 2015
oil and acrylic on canvas
55cm x 55cm



Exploration 15
Michael Gromm. Across the Road They Ate. Watching Rambo 2015
oil and acrylic on canvas
55cm x 55cm



Exploration 15
Wong Weng Io. Untitled 2015
mixed media, plaster, lights, timber
cm x cm dimensions variable, POA



Exploration 15
Amber-Rose Hulme. Empty Spaces 2015
pastel on paper
76cm x 56cm , framed



Exploration 15
Amber-Rose Hulme. Epilogue 2015
 pastel on paper
 101cm x 55cm , framed



Exploration 15
Amber-Rose Hulme. Halfway Up Isn't Up 2015
 pastel on paper
 101cm x 55cm , framed



Exploration 15
Amber-Rose Hulme. Just My Words 2015
 pastel on paper
 101cm x 66cm , framed



Exploration 15
Amber-Rose Hulme. Laneway Chatter 2015

pastel on paper
101cm x 66cm , framed



Exploration 15
Amber-Rose Hulme. Suspended 2015
pastel on paper
76cm x 56cm , framed



Exploration 15
Polly Hollyoak. Benefit 2015
oil on linen
182cm x 106cm



Exploration 15
Polly Hollyoak. Pucker Up 2015
oil on linen
150cm x 110cm



Exploration 15
Polly Hollyoak. Lime Splice 2015
 oil on linen
 182cm x 106cm



Exploration 15
Drasko Boljevic. Kino 1 & 2 2014
 wood, acrylic, glue, sand, projector, anamorphic projection
 190cm x 45cm x 40cm priced individually



Exploration 15
Drasko Boljevic. Breakdances 2015
 anamorphic digital projection
 cm x cm dimensions variable, edition of 10.



Exploration 15
Drasko Boljevic. Collaging Realities 2015

anamorphic digital projection
cm x cm dimensions variable, edition of 10.



Exploration 15
Ilya Milstein. Jacob, Rodney Cohen 2015
16.9 HD digital video, 2 channel stereo sound
cm x cm dimensions variable, edition of 3 + 1AP. POA



Exploration 15
Harley Manifold. Found A Friend 2015
oil on canvas
25cm x 30cm



Exploration 15
Harley Manifold. A Quiet Glow 2015
oil on canvas
25cm x 30cm



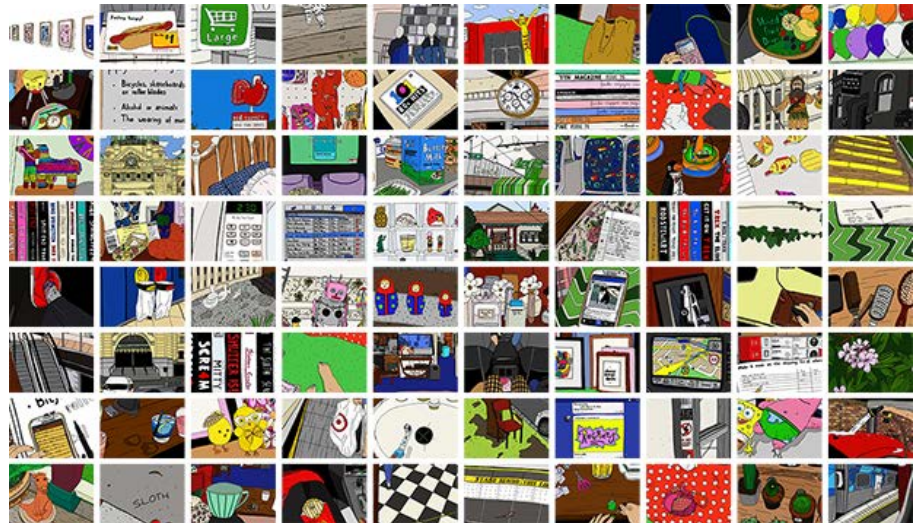
Exploration 15
Harley Manifold. Paradise Parade 2015
oil on Belgian linen
112cm x 168cm



Exploration 15
Harley Manifold. Ping Test 2015
 oil on Belgian linen
 97cm x 129cm



Exploration 15
Harley Manifold. Stairway To 2015
 oil on polycotton
 87cm x 130cm



Exploration 15
Tegan Iversen. Everyday Now 2015
 archival giclee prints
 21cm x 29cm , comprised of 80 prints. editions of 10. priced individually



Exploration 15
Thomas Bowman. Rational Lies 2015
 wire, sculpting putty, acrylic, concave mirror
 4cm x 8cm x 8 cm



Exploration 15
Thomas Bowman. Will 2015
 wire, sculpting putty, acrylic, cork, cotton
 9cm x 3cm x 3 cm



Exploration 15
Thomas Bowman. A Bit Higher 2015
 sculpting putty, acrylic, cork
 8cm x 3cm x 3 cm



Exploration 15
Thomas Bowman. Red Balloon 2 2015
 wire, sculpting putty, acrylic, cork, primed canvas
 24cm x 3cm x 12 cm



Exploration 15
Thomas Bowman. A Depth Uncertain 2015
 wire, sculpting putty, acrylic, cork, primed canvas
 9cm x 7cm x 9 mm



Exploration 15
Thomas Bowman. Web Spinner 2015
 wire, sculpting putty, acrylic, cork, cotton, cotton reel
 3cm x 5cm x 7 cm



Exploration 15
Thomas Bowman. Artistic Identity 2015
 wire, sculpting putty, acrylic, cork, primed canvas
 4cm x 7cm x 9 cm



Exploration 15
Thomas Bowman. Blow Gently 2015
 wire, sculpting putty, acrylic, cork, primed canvas
 8cm x 5cm x 5 cm



Exploration 15
Thomas Bowman. Different Similarities 2015
 wire, sculpting putty, acrylic, resin
 9cm x 5cm x 5 cm



Exploration 15
Thomas Bowman. Red Balloon 2014
 wire, sculpting putty, acrylic, cork, primed canvas
 24cm x 11cm x 3 cm



Exploration 15
Thomas Bowman. Realisation 2015
 wire, sculpting putty, acrylic, cork, primed canvas
 7cm x 2cm x 2 cm



Exploration 15
Thomas Bowman. Embrace 2015
 wire, sculpting putty, acrylic, cork, primed canvas
 5cm x 7cm x 9 cm



Exploration 15
Thomas Bowman. Ghost 2015
 wire, sculpting putty, acrylic, resin
 5cm x 5cm x 5 cm



Exploration 15
Thomas Bowman. Out of Body Experience 2015
 wire, sculpting putty, acrylic, resin
 7cm x 5cm x 5 cm



Exploration 15
Thomas Bowman. Victim of War 2015
 wire, sculpting putty, acrylic
 3cm x 2cm x 2 cm



Exploration 15
Thomas Bowman. Liberty 2015
 wire, sculpting putty, acrylic, cork, primed canvas
 8cm x 7cm x 9 cm



Exploration 15
Thomas Bowman. Marry That Girl 2015
 wire, sculpting putty, acrylic, cork, primed canvas
 7cm x 9cm x 7 cm



Exploration 15
Thomas Bowman. Me As A Female 2015
 wire, sculpting putty, acrylic, cork, primed canvas
 8cm x 3cm x 3 cm



Exploration 15
Thomas Bowman. Nightlock 2015
 wire, sculpting putty, acrylic, cork, primed canvas
 7cm x 3cm x 3 cm



Exploration 15
Thomas Bowman. NO! 2015
 wire, sculpting putty, acrylic, cork, primed canvas
 8cm x 2cm x 2 cm



Exploration 15

Thomas Bowman. Red Dust 2014

wire, sculpting putty, acrylic, primed canvas

7cm x 7cm x 9 cm

137 FLINDERS LANE MELBOURNE 3000 TUES-FRI 11AM TO 6PM, SAT 11AM TO 5PM or 3PM on last weekend for de-install + 61 3 9654 3332 INFO@FLG.COM.AU