

**EXHIBITIONS** Warlukurlangu Artists *Desert Days* 13th January 2015 - 31st January 2015

For this exhibition we have brought together another glorious, vibrant selection of quality works from the Warlukurlangu Arts Community, located north west of Alice Springs.

**More works from the Community** can be [viewed here](#)

Artworks telling Dreamtime stories of Country, water soakages, ancestral sisters and brothers, rainbow serpents, bush food, rock shelters, flying ants, dogwood trees, snake vine, love stories, tragedies and more. Tales rich in content are retold with vision and vigour, as the artists re-interpret their strong cultural heritage in contemporary ways.



Above: Warlu artists in the studio

Established in 1985 Warlukurlangu Artists Aboriginal Corporation is a not-for-profit organisation that is 100% Aboriginal-owned by its artists from the remote desert communities of Yuendumu (which lies 300 kilometres northwest of Alice Springs) and Nyirripi in Central Australia. Warlukurlangu Artists are famous for its gloriously colourful acrylic paintings and limited edition prints. The art centre has a national and international profile and its art has been featured in hundreds of exhibitions and publications in Australia and around the world.

Today, Warlukurlangu is an essential and integral part of the Yuendumu community and economic life and strives to continuously strengthen its relationships with other local and regional community organisations. In recent years it has contributed financial and administrative support to the local Mount Theo Youth Program community pool project; has run film nights with the local Warlpiri Media company; conducted painting projects with the local school and child-care centre; and provided funds and support for community elders, many of whom are practicing artists, to travel to regional hospitals for eye cataract surgery. Another community-based project that Warlukurlangu has been proud to support are the many "Bush Trips" that take artists back to their homelands, often many hundreds of kilometres away from Yuendumu - country that some artists may have not visited for many years.



Gayle Napangardi Gibson  
*Mina Mina Dreaming #1738-14ny 2014*  
acrylic on canvas  
122cm x 122cm



Georgina Nakamarra Wilson  
*Water Dreaming - Pirlinyarnu #4287-14 2014*  
acrylic on canvas  
76cm x 91cm



Maisie Nungarrayi Ward  
*Desert Oak Dreaming #1198-14ny 2014*  
acrylic on canvas  
76cm x 91cm



Above: Warlu artists in the studio

Warlukurlangu has evolved according to public demand for their artworks and the needs and cultural imperatives of the artists. During the early years of its operation the art centre had a strong emphasis on collective pieces and group exhibitions. After several years individual artists of particular talent emerged and started to produce remarkable fine-art works that were - and continue to be - keenly sought by individual collectors and public and private galleries. Many artists have also made an impact as social communicators between the two worlds of remote Aboriginal Australia and the dominant Australian society.



Above: Warlu artists in the studio

Over the last few years the focus of Warlukurlangu artists has been to nurture and develop a strong contingent of emerging and mid-career artists. Often young artists with potential are encouraged to develop their own characteristic painting style by one-to-one coaching, feedback and support from fellow artists and Warlukurlangu staff.

Many of these younger artists are now emerging as wonderful talents, often demonstrating innovative use of materials and techniques and it is these emerging artists that will form the next generations of Warlukurlangu fine-art painters, with many of them already selected for solo shows in Australia and overseas.

The staff and artists at Warlukurlangu believe that in order to ensure a strong future they must pay respectful tribute to the riches of an ancient past and at the same time look forward to all of the challenges and opportunities that the future can offer the artists that work there.

JOIN OUR MAILING LIST



Maisie Nungarrayi Ward  
*Desert Oak dreaming #1891-14ny* 2014  
acrylic on canvas  
76cm x 91cm



Alice Nampijinpa Michaels  
*Lappi Lappi Dreaming #2332-14ny* 2014  
acrylic on canvas  
61cm x 46cm



Christine Napanangka Michaels  
*Lappi Lappi Dreaming #3214-14ny* 2014  
acrylic on canvas  
107cm x 76cm



Gayle Napangardi Gibson  
*Mina Mina Dreaming #1584-14ny* 2014  
acrylic on canvas  
91cm x 183cm



Geraldine Nangala Gallagher  
*Emu Dreaming #2258-14ny 2014*  
acrylic on canvas  
30cm x 91cm



Hilda Nakamarra Rogers  
*Desert Fringe Rush Seed Dreaming #3978-14ny 2014*  
acrylic on canvas  
46cm x 91cm



Murdie Nampijinpa Morris  
*Two Dogs Dreaming #2254-14ny 2014*  
acrylic on canvas  
107cm x 91cm

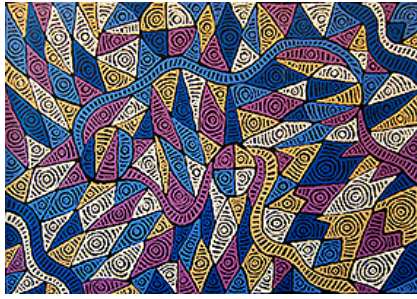


Murdie Nampijinpa Morris  
*Two Dogs Dreaming #2336-14ny 2014*  
acrylic on canvas  
107cm x 91cm

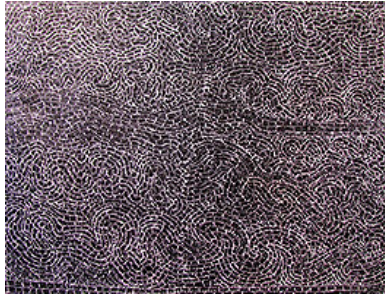


Margaret Nangala Gallagher  
*Emu Dreaming (155-14ny) 2014*  
acrylic on linen  
91cm x 91cm

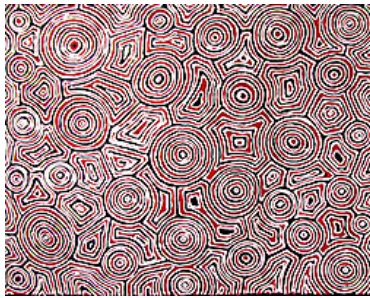




Pauline Napangardi Gallagher  
*Mina Mina Dreaming - Ngalyipi #1025/14ny* 2014  
acrylic on canvas  
76cm x 107cm



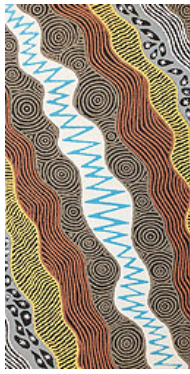
Sabrina Nangala Robertson  
*Mina Mina Dreaming - Ngalyipi #2946-14ny* 2014  
acrylic on canvas  
91cm x 122cm



Sarah Napurrurla White  
*Bush Onion Dreaming #2315-14ny* 2014  
acrylic on canvas  
61cm x 76cm



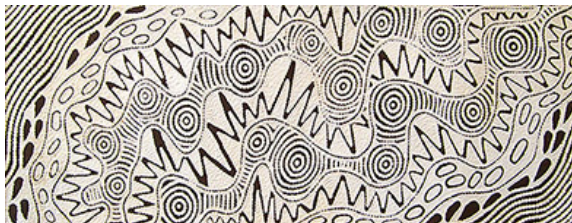
Ursula Napangardi Hudson  
*Pikilyi Jukurrpa, 794-14ny* 2014  
acrylic on canvas  
61cm x 46cm



Ursula Napangardi Hudson  
*Pikilyi Jukurpa, 729-14ny* 2014  
acrylic on canvas  
122cm x 61cm



Judy Napangardi Watson  
*Mina Mina Dreaming #1195-11* 2014  
acrylic on canvas  
107cm x 76cm



Ursula Napangardi Hudson  
*Vaughan Springs Dreaming #1855/14ny* 2014  
acrylic on canvas  
46cm x 122cm



Ursula Napangardi Hudson  
*Vaughan Springs Dreaming #2311/14ny* 2014  
acrylic on canvas  
46cm x 107cm



Gayle Napangardi Gibson  
*Mina Mina Dreaming - Ngalyipi #1205/14ny 2014*  
acrylic on canvas  
61cm x 107cm



Lynette Nangala Singleton  
*Ngapa Jukurpa (Water Dreaming), 01-14ny 2014*  
acrylic on canvas  
152cm x 107cm



Lynette Nangala Singleton  
*Water Dreaming - Puyurru #1743/14ny 2014*  
acrylic on canvas  
122cm x 122cm



Priscilla Napurrurla Herbert  
*Desert Fringe-rush Seed Dreaming #1089/14ny 2014*  
acrylic on canvas  
76cm x 30cm



Bidy Napaljarri White  
*Budgerigar Dreaming #581-14 2014*  
acrylic on canvas  
30cm x 61cm



Pauline Nampijinpa Singleton  
*Emu Dreaming #2542-14 2014*  
acrylic on canvas  
61cm x 30cm