

SARAH AMOS

ABOVE & BELOW

6 - 24 August 2013

This body of work was specifically made for this intimate space at Flinders Lane Gallery, and was initially conceived from a Residency Program that I attended in 2012 at the Art Vault in Mildura, Victoria.

My work is evocative of the Australian landscape especially the palette that is typically desert, arid and sun burnt in color. This strikes some people as odd as I live in the greenest State in the United States. However when I think of the surroundings that best support and feed my work it is in the open vistas and colors of the Australian bush that truly excite. My interests are still immersed in the natural and scientific worlds and this recent expedition to Lake Mungo falls right into my wheelhouse, bringing both ancient cultures and geological oddities to me for further scrutiny and visual dissection.

So it was very exciting for me, a Melbourne/Vermont girl, to travel to the North-West part of the State and witness the very wild and desolate scenery that is the Lake Mungo National Park in winter. This area is to me the very essence of Australia. The huge blue skies with brilliant, bright light was truly mesmerizing juxtaposed against the red earth. Poisonous dotted melons were clustered all over the ground, as was prickly scrub, razor grasses and a unique Aboriginal history that is steeped in great historical and geographical importance to the area and the Nation. I witnessed a deeply aged and slumbering giant, a landscape awaiting its next metamorphosis.

Dead Black Box gums stood like soldiers throughout the park and burnt out logs were abundant and placed in huge piles that created fabulous graphic shapes against the waves of ochre sand. Large rolls of red rusted barbed wire were abandoned as if to point out how tough you have to be to survive out there. While a huge wooden barn structure, like an ancient temple, a remnant of another prosperous time, sat quietly as it is ravaged by sun and sand daily. There was great life here, both ancient and modern, contrasted against tragedy, extreme hardship and now a discerning tranquility.

In addition to the unique visual oddities that were abundant on the surface of the park, I began to think about what else was buried within the layers of soil, sand and crystals below. Of great interest to me is the natural history of the area and geological timelines, and so I was very eager to immerse myself and my pen into this rare snapshot of geology and archaeology. What I found particularly interesting was how Lake Mungo was formed and what it may have looked like thousands of years ago, but now buried with salt that form the lake region today. Within Mungo's red sediment, the empty but gorgeous landscape above and the rich historical experience emerged these images real, imagined and half-forgotten.

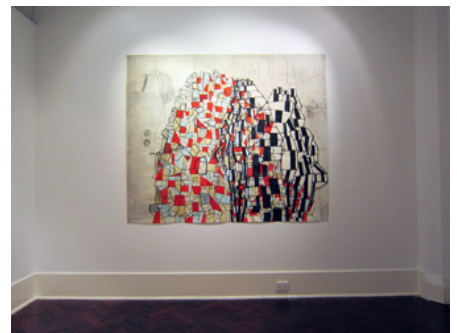
Sarah Amos 2013

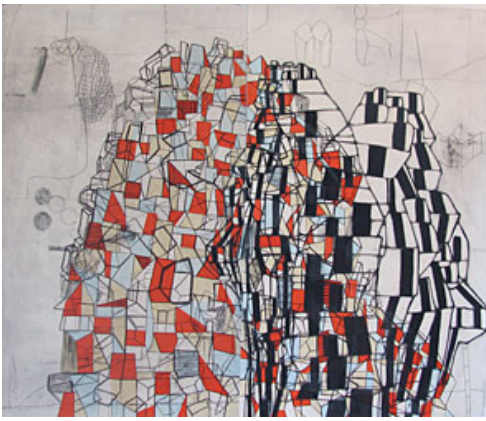


Above & Below installation views



Above & Below installation views





Black Box Gum 2 2013
Collagraph on Japanese paper with Gouache (diptych)
164 x 198 cm (unframed)



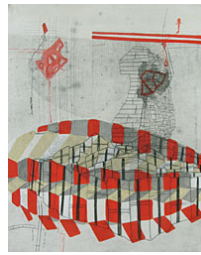
Artworks in-situ on 3.7m wall



Black Box 2 2013
Collagraph on Japanese Paper with Gouache on canvas stretcher
50 x 40cm



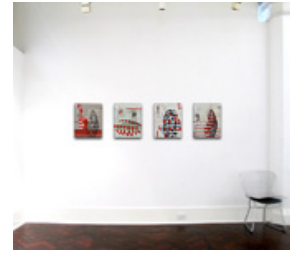
Black Box 4 2013
Collagraph on Japanese Paper with Gouache on canvas stretcher
50 x 40cm



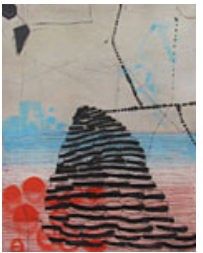
Black Box 8 2013
Collagraph on Japanese Paper with Gouache on canvas stretcher
50 x 40cm



Black Box 11 2013
Collagraph with Gouache on linen
50 x 40cm



Artworks in-situ on 3.7m wall



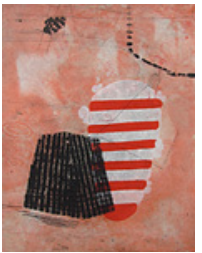
Lunette 2 2013
Collagraph on Japanese Paper with Gouache on canvas stretcher
50 x 40cm



Black Box 12 2013
Collagraph with Gouache on linen
50 x 40cm



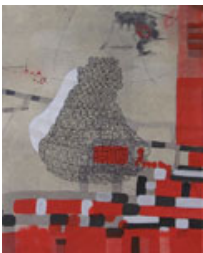
Lunette 1 2013
Collagraph on Japanese Paper with Gouache on canvas stretcher
50 x 40cm



Lunette 4 2013
Collagraph on Japanese Paper with Gouache on canvas stretcher
50 x 40cm



Lunette 6 2013
Collagraph on Japanese Paper with Gouache on canvas stretcher
50 x 40cm



Lunette 15 2013
Collagraph on Japanese Paper with Gouache on canvas stretcher
50 x 40cm



Lunette 17 2013
Collagraph on Japanese Paper with Gouache on canvas stretcher
50 x 40cm



Lunette 21 2013
Collagraph on Japanese Paper with Gouache on canvas stretcher
50 x 40cm



Lunette 22 2013
Collagraph on Japanese Paper with Gouache on canvas stretcher
50 x 40cm



Black Box 1 2013
Collagraph on Japanese Paper with Gouache on canvas stretcher
50 x 40cm



Lunette 7 2013
Collagraph on
Japanese Paper with
Gouache on canvas
stretcher
50 x 40cm



Lunette 8 2013
Collagraph on
Japanese Paper with
Gouache on canvas
stretcher
50 x 40cm



Lunette 11 2013
Collagraph on
Japanese Paper
with Gouache on
canvas stretcher
50 x 40cm



Lunette 12 2013
Collagraph on
Japanese Paper with
Gouache on canvas
stretcher
50 x 40cm