

EMMA WALKER

WALK THE LINE

29 October - 16 November 2013

'The paintings in this exhibition were born from a series of walks up "Mother's Hill", a steep and majestic prominence overlooking Lake George and the town of Bungendore in NSW. The panoramic views were beautiful but my eye was captured by the lurid yellow lichen on the branches of acacias, the smooth white trunks of Maniferas, the tangled lines of fallen tree limbs and the gigantic, precariously stacked boulders that sat like sentinels, guarding something mysterious and precious. Walking alone, being away, making drawings and experiencing the sounds and sensations of the bush. The slow decent of quietness as the concerns of daily life start to fall away and a feeling of focused alertness begins to prevail. An exploration and interaction between human and nature. These are abstract paintings. They are informed by a place but are more to do with an exploration of internal spaces. Memories of landscape and place and the people that have inhabited them. A process of exploration; of thinking, of paint, of being.'

Emma Walker 2013



Walk the Line installation



Walk the Line installation



Above & Beyond I 2013
 oil on linen
 90 x 90cm



Above & Beyond II 2013
 oil on linen
 90 x 90cm



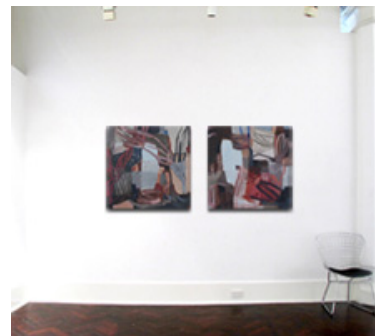
in situ on 3.7m wall



Tracks and Trails I 2013
 oil on linen
 90 x 90cm



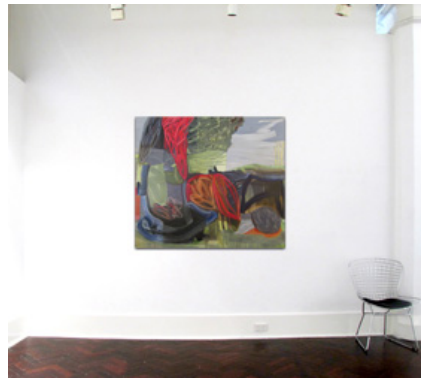
Tracks and Trails II 2013
 oil on linen
 90 x 90cm



in situ on 3.7m wall



Mothers Hill III 2013
oil on linen
130 x 150cm



in situ on 3.7m wall



Up and Over 2013
oil on linen
130 x 150cm



in situ on 3.7m wall



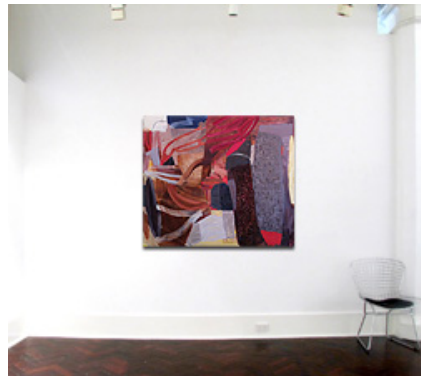
Walk the Line installation



Walk the Line installation



Over & Beyond 2013
oil on linen
130 x 150cm



in situ on 3.7m wall



There and Here 2013
oil on linen
160 x 180cm



in situ on 3.7m wall



Walk the Line 2013
oil on linen
160 x 180cm



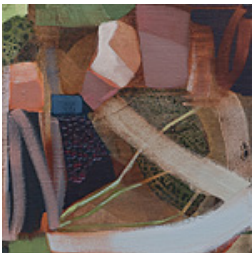
in situ on 3.7m wall



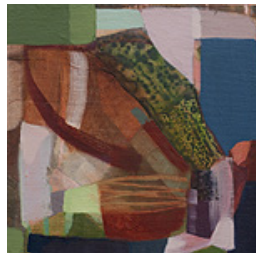
Walk the Line installation



Walk the Line installation



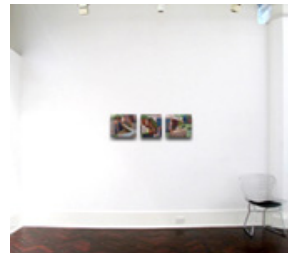
Pathways I 2013
oil on linen
30 x 30cm



Pathways II 2013
oil on linen
30 x 30cm



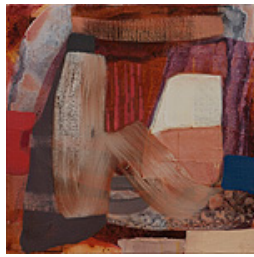
Pathways III 2013
oil on linen
30 x 30cm



in situ on 3.7m wall



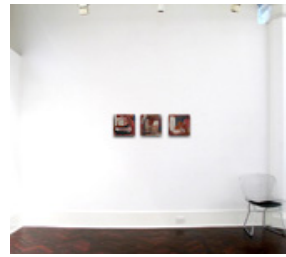
Pathways IV 2013
oil on linen
30 x 30cm



Pathways V 2013
oil on linen
30 x 30cm



Pathways VI 2013
oil on linen
30 x 30cm



in situ on 3.7m wall



Walk the Line installation



Walk the Line installation