

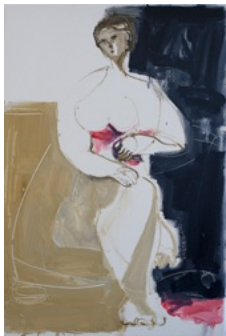
SYLVIA MCEWAN
ALONG THE LINE
 11- 29 November 2012

Drawing on references as diverse as Classicism and Cubism, Sylvia McEwan strives for her own language to represent and recreate the female form. The true subject of her painting is always space, line, colour and form.

Sylvia McEwan was born in Melbourne, but following a move to Sydney in the 1980s she began her artistic exploration firstly in sculpture, working in marble and limestone whilst at the same time undertaking an extensive study of life drawing. After moving to Brisbane, she completed her visual arts studies majoring in sculpture, and under the direction of William Robinson and Joe Furlonger, began an interest in painting. Her artistic development was fuelled by the love for the New York School of Abstract Expressionists, especially William De Kooning's strong figurative work. Throughout her career Sylvia has worked in all painting genres, moving between still life through to landscape and figurative. Always using the subject matter as the starting point, Sylvia carves the form within the painting to reveal a cubist interpretation of the figure. She has been a finalist in the Sulman Prize, the Paddington Art Prize, the Fleurieu Art Prize, and has just been Highly Commended in the drawing category of the Waverley Art Prize 2012.



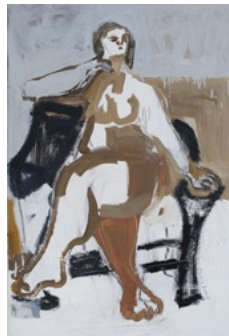
Exhibition installation views



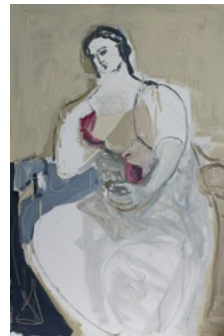
Sylvia McEwan
Seated Figure IX
 91 x 61cm
 oil on canvas



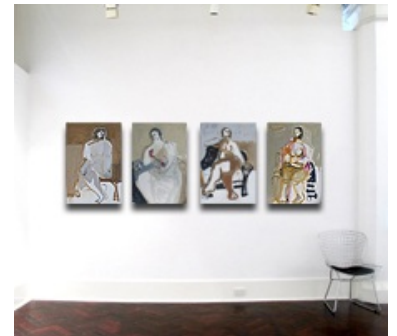
Sylvia McEwan
Seated Figure VIII
 91 x 61cm
 oil on canvas



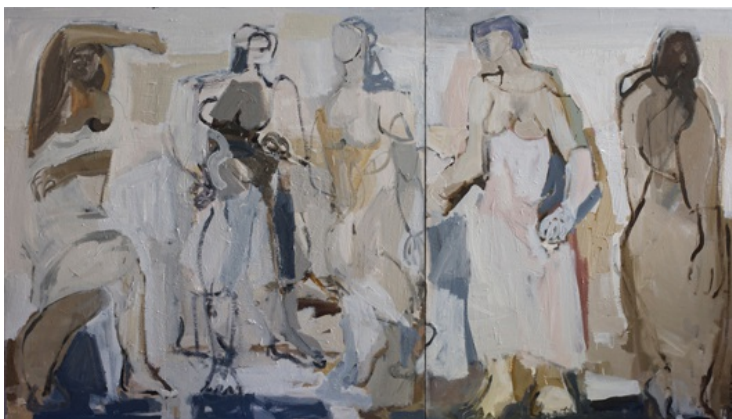
Sylvia McEwan
Seated Figure VI
 91 x 61cm
 oil on canvas



Sylvia McEwan
Seated Figure V
 91 x 61cm
 oil on canvas



Seated Figures placed on 3.7m wall



Sylvia McEwan
Five Bathers
 oil on canvas
 120 x 210cm (diptych)



Five Bathers placed on 2.5 metre wall



Sylvia McEwan
Figures No 1
61 x 72cm
mixed media on paper (framed)



Framed artwork



Sylvia McEwan
Figures No 8
61 x 72cm
mixed media on paper (framed)



Framed artwork



Sylvia McEwan
Still Life Again No 1
50 x 40cm
oil on linen



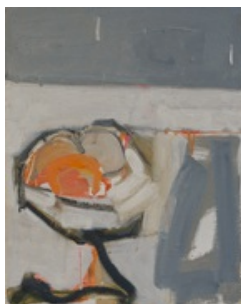
Sylvia McEwan
Still Life Again No 2
50 x 40cm
oil on linen



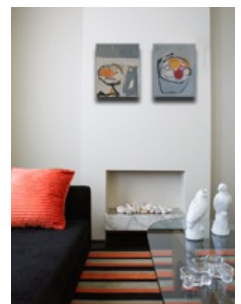
Sylvia McEwan
Still Life Again No 3
50 x 40cm
oil on linen



Sylvia McEwan
Still Life Again No 4
50 x 40cm
oil on linen



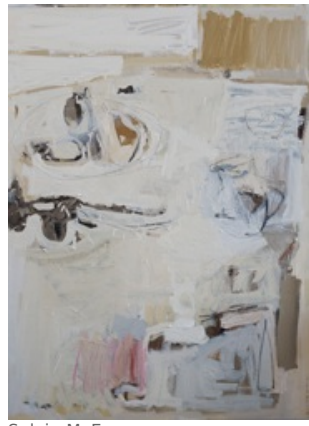
Sylvia McEwan
Still Life Again No 5
50 x 40cm
oil on linen



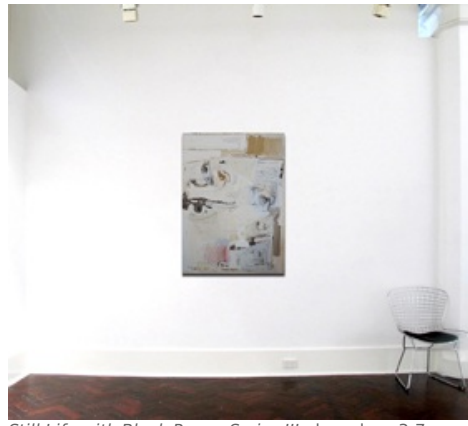
*Still Life Again No 4 and
Still Life Again No 5*
shown on 1.2m wall



Sylvia McEwan
Still Life with Black Rose - Series I
oil on canvas
122 x 92cm



Sylvia McEwan
Still Life with Black Rose - Series III
oil on canvas
122 x 92cm



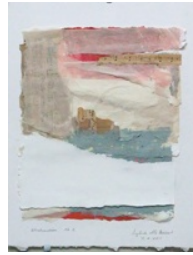
Still Life with Black Rose - Series III placed on 3.7m wall



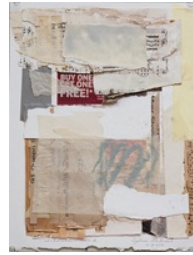
Sylvia McEwan
Abstraction No 1
43 x 34cm
mixed media
on paper (framed)



Sylvia McEwan
Abstraction No 2
43 x 34cm
mixed media
on paper (framed)



Sylvia McEwan
Abstraction No 3
43 x 34cm
mixed media
on paper (framed)



Sylvia McEwan
Abstraction No 4
43 x 34cm
mixed media
on paper (framed)



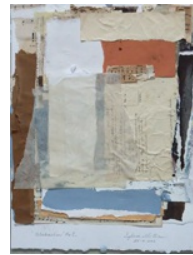
Sylvia McEwan
Abstraction No 5
43 x 34cm
mixed media
on paper (framed)



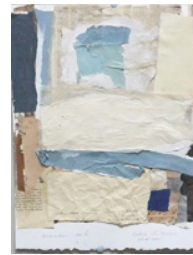
Sylvia McEwan
Abstraction No 6
43 x 34cm
mixed media
on paper (framed)



Sylvia McEwan
Abstraction No 7
43 x 34cm
mixed media
on paper (framed)



Sylvia McEwan
Abstraction No 8
43 x 34cm
mixed media
on paper (framed)



Sylvia McEwan
Abstraction No 9
43 x 34cm
mixed media
on paper (framed)



Abstraction series, installation views

