



FLINDERSLANEGALLERY

137 FLINDERS LANE MELBOURNE 3000
TUES-FRI 11AM TO 6PM, SAT 11AM TO 5PM
+ 61 3 9654 3332 INFO@FLG.COM.AU
Exceptional & collectable art since 1989

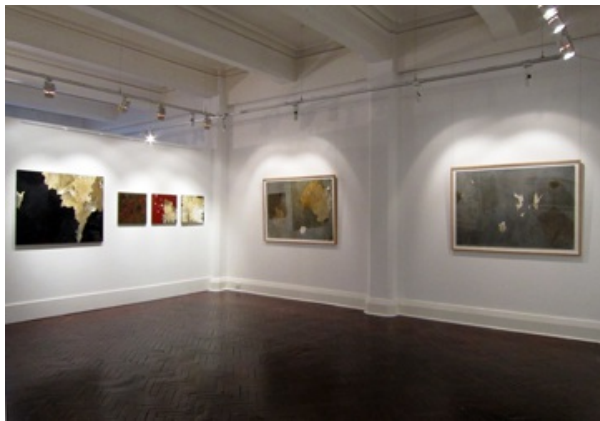
MELINDA SCHAWEL TORN

11 - 29 September 2012

Using traditional media in unconventional ways, Melinda Schawel's process has given form to and ultimately defined the images. Attracted to the unpredictability inherent in this approach, papers collaged onto wood are sanded, ripped away, covered in ink washes, written on, and waxed.

'...I continue to build up the surface and push the boundaries of the medium by peeling, tearing and perforating the paper until it borders on the three dimensional. The process represents the challenges of being in transition, of being pulled in different directions, the feeling of occupying two or more spaces at once, of trying to maintain the delicate balance between control and unpredictability. Essentially, the mixed media works in Torn are experimental iterations driven by a love of materials and surfaces and the search to find the optimum point where ideas, technique and media come together.'

Melinda Schawel 2012



Exhibition installation views



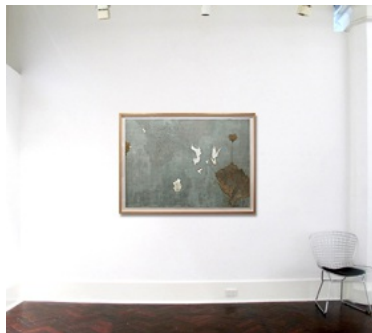
Your Own Way
ink, wax, and collaged and torn paper on board
120 x 140cm



Virtually placed *Your Own Way* in situ (interior Greg Natale Design)



Everyone's Gotta be Somewhere
ink, wax on torn paper
100 x 140cm (framed 112 x 153cm)



Everyone's Gotta be Somewhere
Example of artwork on 3.7m wall



I'm Always Where I Need To Be
ink, wax on torn paper
100 x 140cm (framed 112 x 153cm)



I'm Always Where I Need To Be
Example of artwork on 3.7m wall



Where to End
ink, wax, and collaged and torn paper on board
100 x 120cm



Where to End installation view



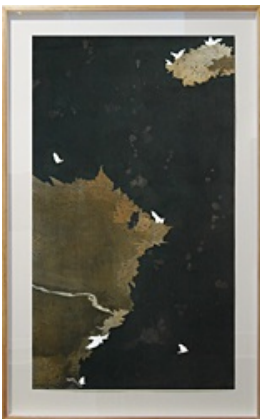
From Little Things Big Things Grow
ink, wax on torn paper (framed)
100 x 100cm



Belinda's Lotus
ink on torn paper (framed)
55 x 60cm



Please Don't Go
ink on torn paper (framed)
55 x 60cm



Bird's Eye Few I
ink on torn paper
89 x 50cm
(framed 104 x 64cm)



Bird's Eye Few II
ink on torn paper
89 x 50cm
(framed 104 x 64cm)



Exhibition installation view



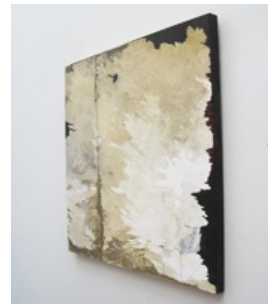
Sounding it Out
ink, wax, collaged and torn
paper on board
50 x 50cm



Sounding it Out side view



On the Way
ink, wax, and collaged and torn
paper on board
50 x 50cm



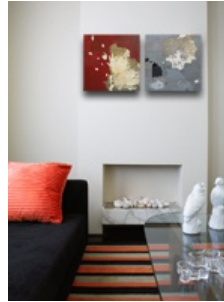
On the Way side view



Fleeting
ink, wax, and collaged and torn
paper on board
50 x 50cm



They Play
ink, wax, and collaged and torn
paper on board
50 x 50cm



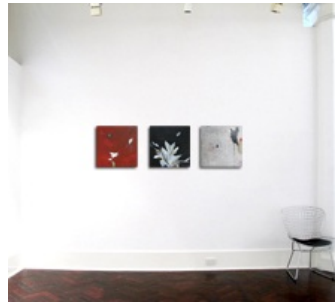
Virtually placed *Fleeting*
& *They Play* in situ on
1.2m wall (interior
Greg Natale Design)



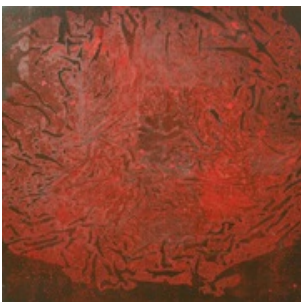
You Lead
ink, wax, collaged and torn
paper on board
50 x 50cm



Go
ink, wax, collaged and torn
paper on board
50 x 50cm



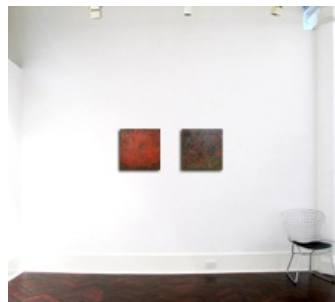
You Lead, *Go* and *Sounding it Out*
in situ on 3.7m wall



Another Day
ink, wax, and collaged
and torn paper on board
50 x 50cm



I'll Follow
ink, wax, and collaged
and torn paper on board
50 x 50cm



Another Day, and *I'll Follow*
in situ on 3.7m wall