

CHRISTOPHE STIBIO

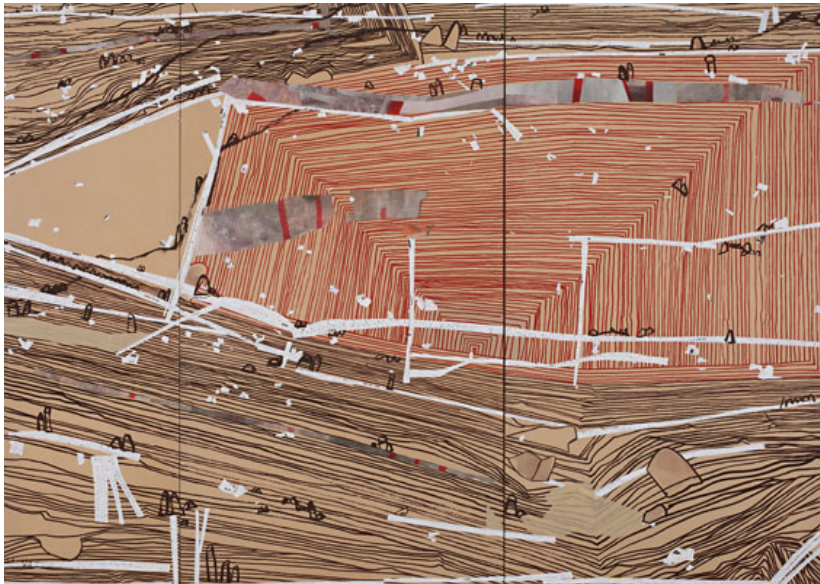
MAPPING THE LANDSCAPE

21 August - 8 September 2012

'The landscape in front of me is like an open book that I choose to see how far I can be transported by.'

As part of his ongoing exploration of landscape, Christophe Stibio presents new works in his upcoming exhibition, *Mapping the Landscape*. Exploring a central idea of incompleteness along with his last visit to the Royal National Park on NSW's central coast, Stibio's new series is a carefully formulated non-allegorical response to landscape. Refusing to go along with the inherited and persisting image of an alienated human presence in an excluding hostile environment, Stibio instead invites us to approach the landscape in a more open manner. The strips of shredded documents layered onto his work prompt images that keep moving, mutating and self-transforming. These paintings do not conform to any pre-existing idea of what the landscape should be. Instead they choose to render its multiplicity - not just fear-invoking magnitude, but also its fragility and intimacy.

Having undertaken fine art training under the tutelage of Chinese master painters, Christophe Stibio's resulting practice revolves around a work ethic combining patience, control and an astute awareness of time. Christophe has just been selected as a Finalist in the 2012 John Leslie Art Prize. In the past three years he has been shortlisted for the Fleurieu Landscape Prize, the Fleurieu Water Prize, the Paddington Art Prize, and twice for the Stan & Maureen Duke Gold Coast Art Prize.



Christophe Stibio
Unfolding Cliffs at Watamolla
 natural pigments, shredded documents and rice paper on canvas
 200 x 280cm triptych (framed)



Example of virtual artwork hanging in-situ on 3.2m wall (Library interior by Greg Natale Designs)



Christophe Stibio
Flesh of the Coastal Fire Trail
 natural pigments, shredded documents and rice paper on canvas
 132 x 142cm
 This painting was shortlisted for 2012 John Leslie Prize



Example of virtual artwork hanging in-situ on 3m wall (Corporate interior by Greg Natale Designs)



Christophe Stibio
Sunset with Belinda #17
 natural pigments, shredded documents and rice paper on canvas
 150 x 150cm
 This painting was a Finalist in the Fleurieu Landscape Prize.



Example of virtual artwork hanging in-situ on 3m wall (Beachhouse interior by Greg Natale Designs)



Christophe Stibio
Coastal Fire Trail Watamolla
 natural pigments, shredded documents and rice paper on canvas
 60 x 180cm triptych (framed)



Example of virtual artwork hanging in-situ on 3.7m wall



Christophe Stibio
Spiders Corridor
 natural pigments, shredded documents and rice paper on canvas
 60 x 185 cm



Example of virtual artwork hanging in-situ on 3m wall (Beach house interior by Greg Natale Designs)



Christophe Stibio
Spiders Corridor, Ponds Theatre
 natural pigments, shredded documents and rice paper on canvas
 60 x 185 cm diptych (framed)



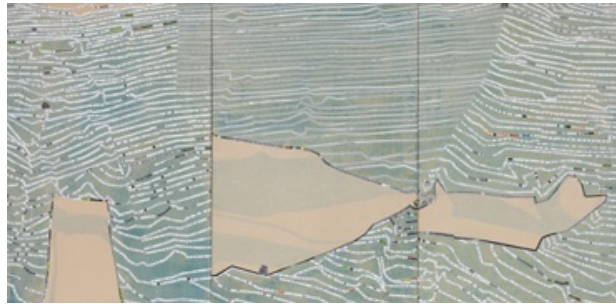
Example of virtual artwork hanging in-situ on 3m wall (Casual dining interior by Greg Natale Designs)



Christophe Stibio
Bundeena Coastal Fire Trail
 natural pigments, shredded documents and rice paper on canvas
 60 x 165 cm triptych (framed)



Example of virtual artwork hanging in-situ on 3m wall (Beach house interior by Greg Natale Designs)



Scarcity Lakes Mungo & Arumpo 2011
 natural pigments, shredded documents and rice paper on canvas
 75 x 155 cm triptych (framed)
 This painting received a Highly Commended Award in the Fleurieu Water Prize.



Example of virtual artwork hanging in-situ on 3.7m wall



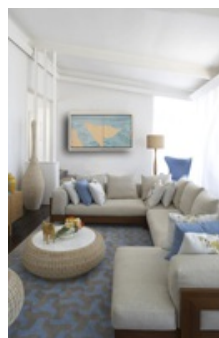
Christophe Stibio
Rocks Plunging in the Pacific, Bundeena Coastline
 natural pigments, shredded documents and rice paper on canvas
 120 x 140cm



Example of virtual artwork hanging in-situ on 3m wall (Beach house interior by Greg Natale Designs)



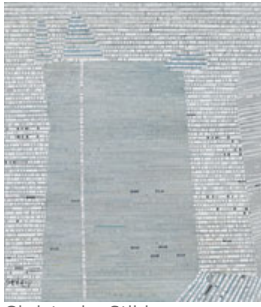
Christophe Stibio
Rorschach Behind Me, in Coastal Fire Trail
 natural pigments, shredded documents and rice paper on canvas
 80 x 150cm diptych (framed)



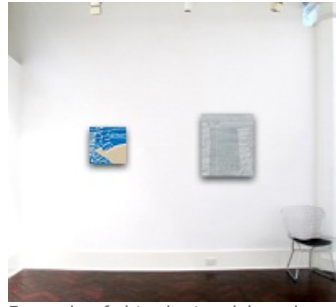
Example of virtual artwork hanging in-situ on 3m wall (Beach house interior by Greg Natale Designs)



Christophe Stibio
Cliff story
natural pigments,
shredded documents and
rice paper on canvas
45x45cm
\$1500AUD



Christophe Stibio
On The Lake-I Still Love You
natural pigments, shredded
documents and rice paper
on canvas
75 x 60cm
\$3,300AUD



Example of virtual artwork hanging
in-situ on 3.7m wall



Exhibition installation views



Exhibition installation views

Except where specified otherwise, all works are painted on Chinese traditional rice paper pasted on canvas according to traditional Chinese techniques. All materials used during this process are archival in quality (starch, glues, papers and pasting devices and tools) in order to insure maximum protection and longevity in optimal exhibition conditions.