

**FRESH
 NOW REPRESENTING**

16 March - 10 April 2010



Richard Blackwell
Downtown I
 laminate on medium density board
 114cm DIA



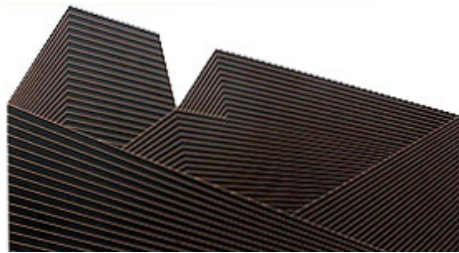
Richard Blackwell
Downtown II
 laminate on medium density board
 114cm DIA



Richard Blackwell
Pritzker Pavillion
 laminate on medium density board
 114cm DIA



Richard Blackwell
N Clark St
 laminate on medium density board
 60 x 120cm



Richard Blackwell
N Randolph St
 laminate on medium density board
 70 x 120cm



Richard Blackwell
Washington Street
 laminate on medium density board
 80 x 120cm



Richard Blackwell
 Installation image



Claire Bridge
Wanderlust
oil on Belgian linen
95.3 x 77cm



Claire Bridge
The Wanderer
oil on Belgian linen
36 x 45.6cm



Claire Bridge
Origin - study for Wanderlust
Oil on panel
15 x 20cm



Claire Bridge
Installation image



Ian Greig
The world wants to see itself
oil on canvas
100 x 100cm



Ian Greig
Fade far away, dissolve, and quite forget
oil on canvas
73 x 121cm



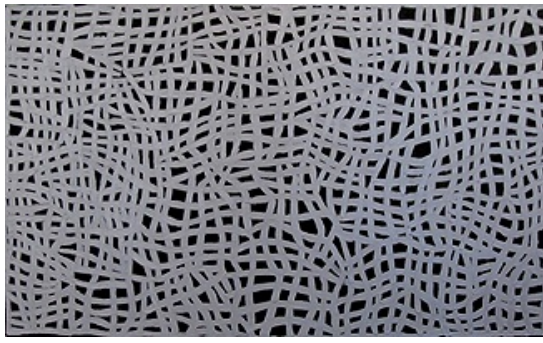
Ian Greig
Out of the blue
oil on canvas
100 x 140cm



Ian Greig
Installation image



Abie Loy Kemarre
Body Painting
 acrylic on Belgian linen
 91 x 152cm
 GAAL12091574



Abie Loy Kemarre
Body Painting
 acrylic on Belgian linen
 91 x 152cm
 GAAL04061436



Abie Loy Kemarre
Bush Leaves
 acrylic on linen
 107 x 107cm



Abie Loy Kemarre
 Installation image



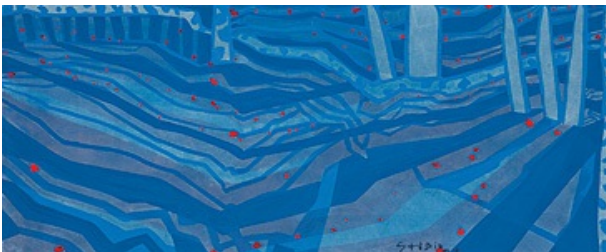
Jean Lyons
Breakwater
 oil and enamel on linen
 91 x 152cm



Jean Lyons
Wash
 oil and enamel on linen
 91 x 152cm



Jean Lyons
 Installation image



Christophe Stibio
Where were you when it happened? #11
 natural pigments on paper mounted on cotton duck
 37 x 89cm



Christophe Stibio
Where were you when it happened? #9
 natural pigments on paper mounted on cotton duck
 46 x 47.5cm



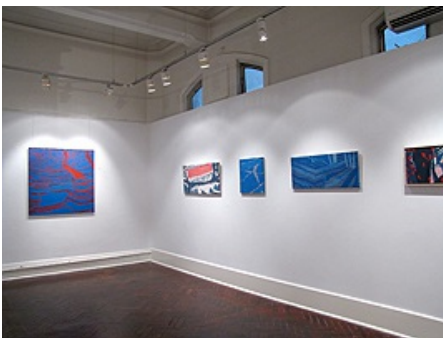
Christophe Stibio
Where were you when it happened? #6
natural pigments on paper mounted on cotton duck
30.5 x 109.5cm



Christophe Stibio
Where were you when it happened? #2
natural pigments on paper mounted on cotton duck
47 x 97cm



Christophe Stibio
Sunset with Belinda #11
natural pigments on paper mounted on cotton duck
110 x 110cm



Christophe Stibio
Installation images



Christine Willcocks
Fallen Leaves
hand coloured drypoint
etching
& found object
(unique 1/1)
28cm x 28cm



Christine Willcocks
Atrophy
hand coloured drypoint
etching (Artist Proof 1/5)
60 x 80cm



Christine Willcocks
The Quiet Collector
graphite with etching overlay
(unique 1/1)
36cm x 43cm



Christine Willcocks
Installation image