

THE PERFUMED GARDEN

12 - 23 February 2008

Lilly Chorny : Lizzie Buckmaster-Dove : Juli Haas : Greer Honeywill : Mark Ogge : Melinda Schawel : Valerie Sparks : Mami Yamanaka

Exploring the nature of intimacy and pleasure **The Perfumed Garden** showcases the work of Flinders Lane Gallery artists whose practices revel in the complex space inhabited by inner passion. Images of Eden-like landscapes, snippets of a love note weathered through time, the tenderness of meticulous patterning and exquisite scenes of love gone wrong are some of the sentiments included in this exhibition dedicated to the month of Love.

Sometimes dark, yet full of exuberance and sensuous humor **The Perfumed Garden** will delight your senses..... and perhaps even those of the one you love.

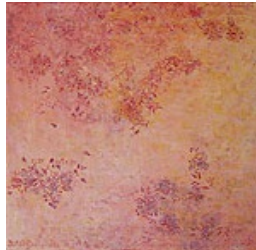
LILLY CHORNY



Perfume Garden
 oil on linen
 130 x 130cm



Floating Chrysanthemum
 oil on linen
 120 x 110cm



Rose Shimmer
 oil on linen
 130 x 130cm

LIZZIE BUCKMASTER DOVE



And cool your eye
 paper collage
 68.7 x 97.5cm



So as to enfold her
 paper collage
 68.7 x 97.5cm

GREER HONEYWILL



See Through
 mixed media
 variable dimensions



(detail)

VALERIE SPARKS



The Light is Different Here
digital print
45 x 75cm

**JULI
HAAS**



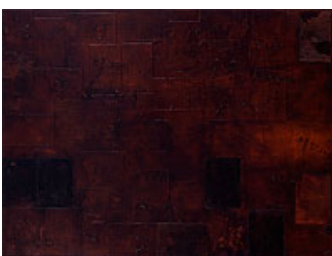
Dream Man
watercolour
76 x 106cm

**MAMI
YAMANAKA**

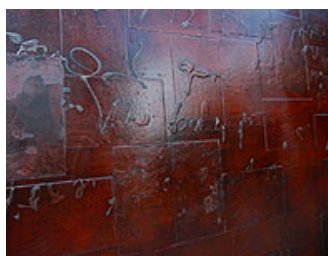


Reflection of Past Dreams III
ink on paper
80 x 121cm

**MELINDA
SCHAWEL**



Love Letter
mixed media on board
120 x 160cm



Love Letter (detail)

MARK
OGGE



Motel I
oil on board
23 x 29cm



Motel II
oil on board
23 x 29cm



Motel III
oil on board
23 x 29cm



Motel IV
oil on board
20 x 26cm



Camillias at Night
oil on board
20 x 26cm



Fountain and Lilies
oil on board
29 x 23cm



Garden
oil on board
29 x 23cm



Garden
oil on board
23 x 29cm



Tree at Night
oil on board
17 x 13cm